

New Paragon Walk, Elephant & Castle

£350,000



Offers in excess of 350,000.

Generous and supremely-located turnkey oversized studio apartment of 40 square metres, with a super-sunny orientation and SE-facing balcony, plus brilliant communal exterior spaces.

Find your new pad on the fourth (top) floor of a low-rise and deftly-executed modern development, just 10 minutes from Elephant & Castle tube.

The property further boasts a fab communal roof terrace (with Shard views) and a concierge-service. The property has been owned just once since new.

MUNDAY'S

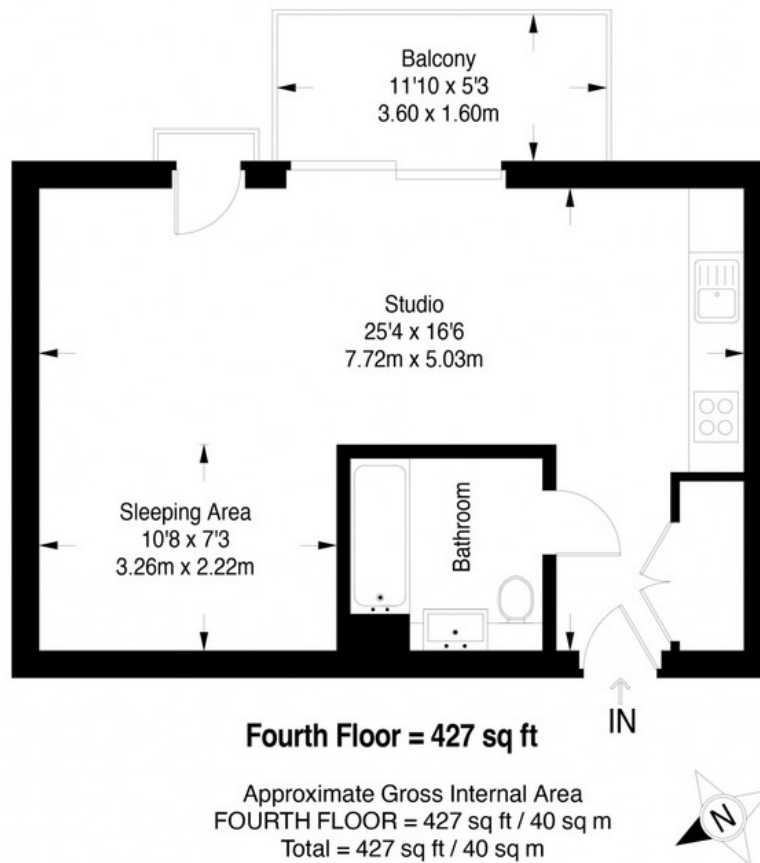


Munday's Estate Agents Ltd.
2 Mary Boast Walk
London SE5 8SP
020 3318 8900

www.mundays.com

MUNDAY'S

Tyler Court



This plan is for layout guidance only. Not drawn to scale unless stated. Windows and door openings are approximate. Whilst every care is taken in the preparation of this plan, please check all dimensions, shapes and compass bearings before making any decisions reliant upon them. (ID357409)