

MUNDAY'S

Nettleton Road, New Cross

£675,000



Well turned out two double bedroom maisonette of 823 square feet, within a tall Victorian townie in Hatcham Conservation Area, just a four minute walk from New Cross Gate Station (Fare Zone 2 with Windrush line trains as well as regular rail services). Or walk 14 to Queens Road Peckham Station.

A Freehold-share, a generous and low-maintenance west/facing garden, and an impressive garden studio (with power and hardwired fibre connection) complete matters.

Munday's Estate Agents Ltd.
2 Mary Boast Walk
London SE5 8SP
020 3318 8900

www.mundays.com

MUNDAY'S

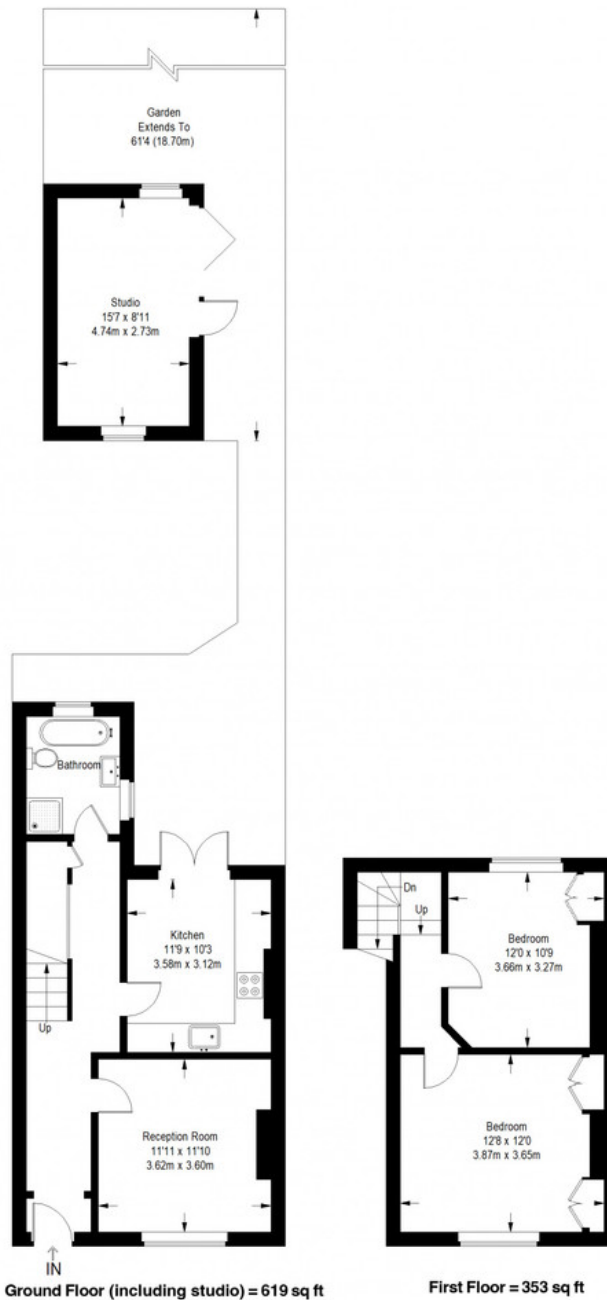


Munday's Estate Agents Ltd.
2 Mary Boast Walk
London SE5 8SP
020 3318 8900

www.mundays.com

MUNDAY'S

Nettleton Road



Approximate Gross Internal Area
GROUND FLOOR (excluding studio) = 480 sq ft / 44.59 sq m
STUDIO = 139 sq ft / 12.94 sq m
FIRST FLOOR = 353 sq ft / 32.86 sq m
Total (including studio) = 972 sq ft / 90.39 sq m

This plan is for layout guidance only. Not drawn to scale unless stated. Windows and door openings are approximate. Whilst every care is taken in the preparation of this plan, please check all dimensions, shapes and compass bearings before making any decisions reliant upon them. (ID357409)

Munday's Estate Agents Ltd.
2 Mary Boast Walk
London SE5 8SP
020 3318 8900

www.mundays.com