

## Moonlight Drive, Forest Hill

£375,000



Offers in excess of £375,000.

One bedroom first floor apartment with just one careful owner from new, with a private covered balcony and a long lease. Find your smart 570 sq ft pad within a smart gated development (with communal secure bike store), close to loads of delightful public green spaces, in Forest Hill/East Dulwich borderland.

Moonlight Drive rests quietly off Wood Vale - a highly desirable residential street of grand Victorian houses in the main. This low-rise boutique modern development is named 'Prosperous Apartments'. A shared secure-entry main door opens to a well-kept communal hall.

MUNDAY'S

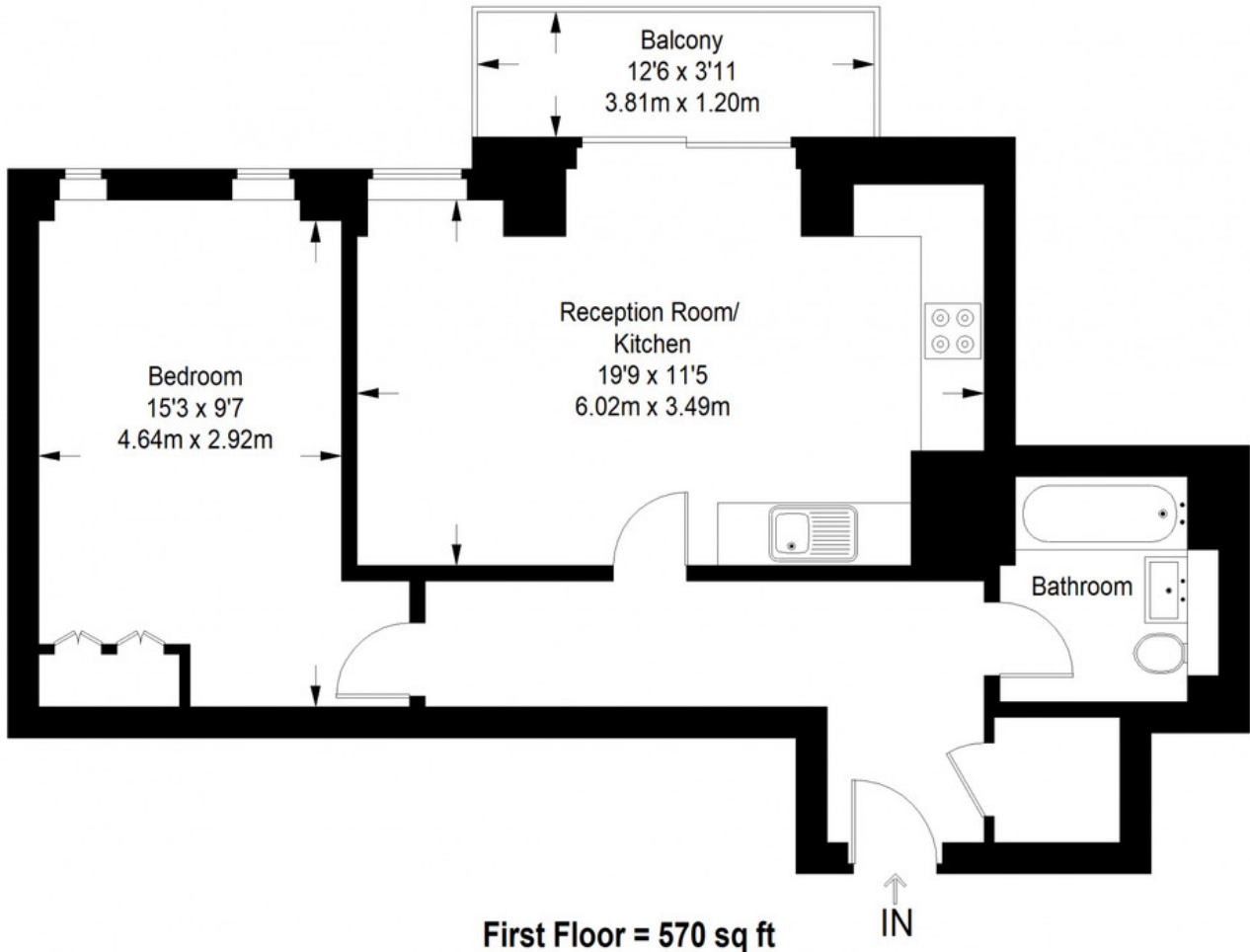


*Munday's Estate Agents Ltd.*  
2 Mary Boast Walk  
London SE5 8SP  
020 3318 8900

[www.mundays.com](http://www.mundays.com)

MUNDAY'S

## Prosperous Apartments



Approximate Gross Internal Area  
FIRST FLOOR = 570 sq ft / 52.95 sq m  
Total = 570 sq ft / 52.95 sq m



This plan is for layout guidance only. Not drawn to scale unless stated. Windows and door openings are approximate. Whilst every care is taken in the preparation of this plan, please check all dimensions, shapes and compass bearings before making any decisions reliant upon them. (ID357409)

*Munday's Estate Agents Ltd.*  
2 Mary Boast Walk  
London SE5 8SP  
020 3318 8900

[www.mundays.com](http://www.mundays.com)