

MUNDAY'S

Mill Road, Deal, Kent

£545,000



Grade II listed Georgian terraced house, with a sunny and well-stocked rear garden in excess of 100 feet. The handsome home is delivered over four floors, with two entrances.

It's a brilliant and central location: really close to Victoria Park (just across the road), the beach (walk seven minutes), Deal town centre (five minutes) and the station (four minutes).

Munday's Estate Agents Ltd.
2 Mary Boast Walk
London SE5 8SP
020 3318 8900

www.mundays.com

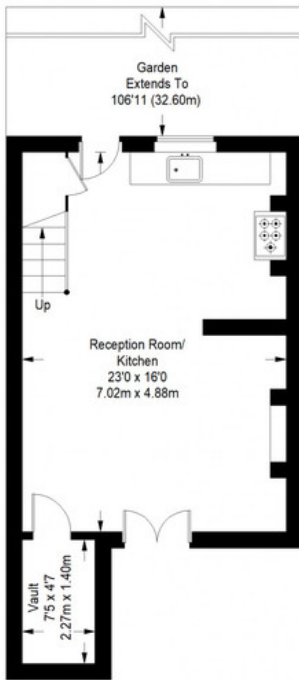
MUNDAY'S



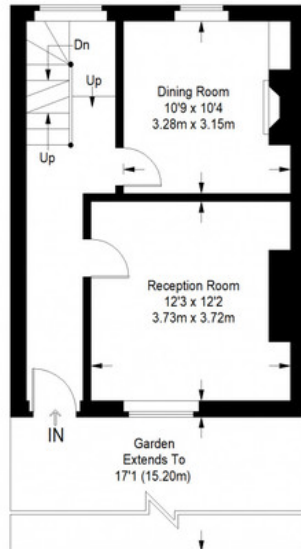
Munday's Estate Agents Ltd.
2 Mary Boast Walk
London SE5 8SP
020 3318 8900

www.mundays.com

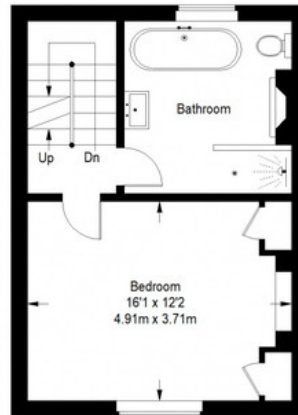
Mill Road



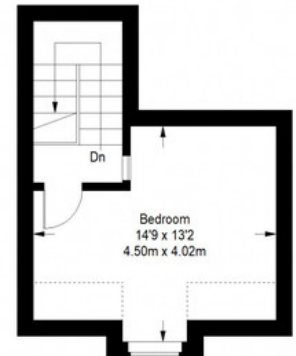
Lower Ground Floor = 412 sq ft



Ground Floor = 372 sq ft



First Floor = 372 sq ft



Second Floor = 214 sq ft

Approximate Gross Internal Area
 LOWER GROUND FLOOR = 412 sq ft / 38.27 sq m
 GROUND FLOOR = 372 sq ft / 34.56 sq m
 FIRST FLOOR = 372 sq ft / 34.56 sq m
 SECOND FLOOR = 214 sq ft / 19.88 sq m
 Total = 1370 sq ft / 127.27 sq m



This plan is for layout guidance only. Not drawn to scale unless stated. Windows and door openings are approximate. Whilst every care is taken in the preparation of this plan, please check all dimensions, shapes and compass bearings before making any decisions reliant upon them. (ID357409)