

MUNDAY'S

Manwood Road, Brockley

£885,000



Smart Victorian terraced house of 1280 square feet, with five double bedrooms, two bathrooms, and a sunny west-facing garden of circa 50 feet.

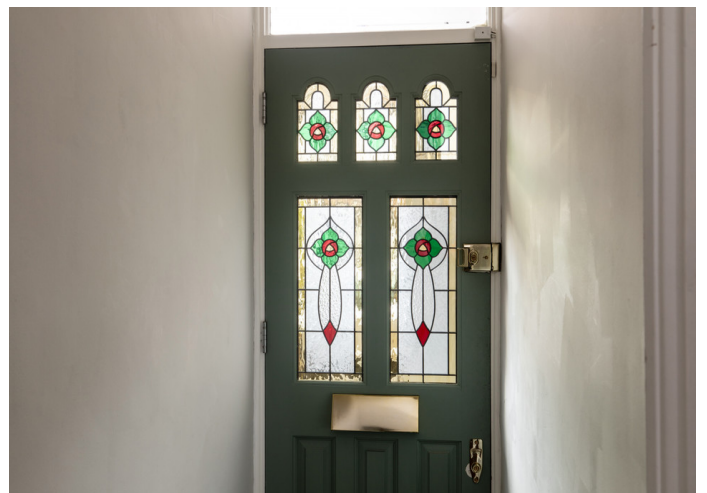
Find your new home on a popular residential street near Ladywell Fields and Blythe Hill Fields, just a short stroll from a trio of stations: Crofton Park, Catford and Ladywell (walk 8, 11 and 12 minutes).

You're also close to a clutch of good primary and secondary schools - including Stillness and Prendergast Ladywell.

Munday's Estate Agents Ltd.
2 Mary Boast Walk
London SE5 8SP
020 3318 8900

www.mundays.com

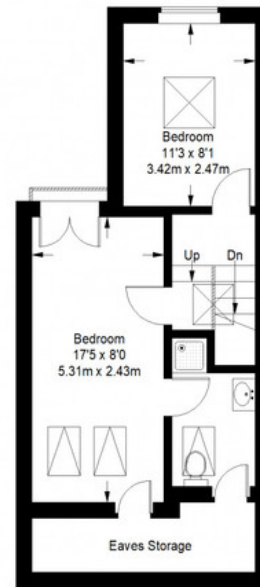
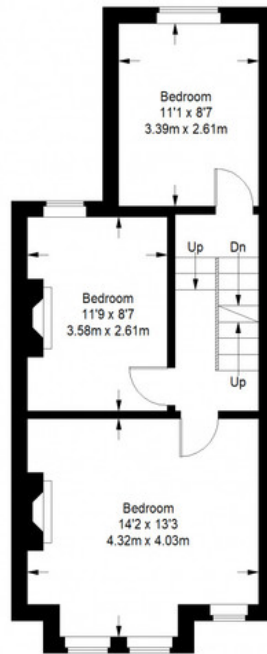
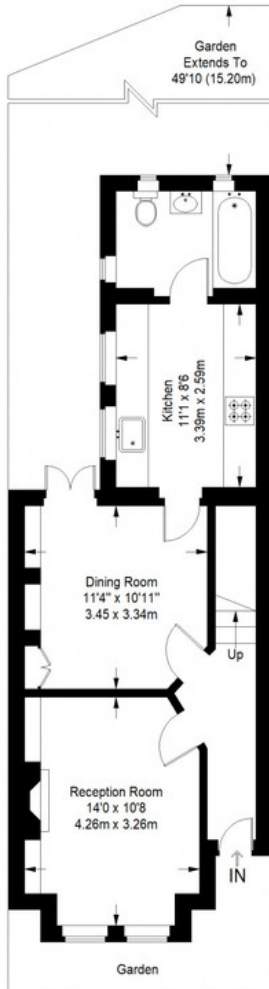
MUNDAY'S



Munday's Estate Agents Ltd.
2 Mary Boast Walk
London SE5 8SP
020 3318 8900

www.mundays.com

Manwood Road



Approximate Gross Internal Area
 GROUND FLOOR = 503 sq ft / 46.73 sq m
 FIRST FLOOR = 448 sq ft / 41.62 sq m
 SECOND FLOOR = 329 sq ft / 30.56 sq m
 Total = 1280 sq ft / 118.91 sq m



This plan is for layout guidance only. Not drawn to scale unless stated. Windows and door openings are approximate. Whilst every care is taken in the preparation of this plan, please check all dimensions, shapes and compass bearings before making any decisions reliant upon them. (ID357409)