

MUNDAY'S

Manor Avenue, Brockley

£450,000



Offers in excess of £450,000.

Beautifully-renovated turnkey Victorian conversion flat of 610 square feet, delivered over the entire lower ground floor of a grand semi-detached Brockley townhouse.

You have your own front entrance and door, a private courtyard garden off the double bedroom, a large reception room, and a Freehold-share. The decorative scheme is classy, light and neutral.

Find the property on a wide street with delightful mature trees, within pretty Brockley Conservation Area, close to Brockley's popular Saturday Market, and just a nine minute walk from both Brockley and St John's stations. You are also but a 12 minute walk from New Cross and Deptford DLR stations (all are Fare Zone 2).

*Munday's Estate Agents Ltd.*  
2 Mary Boast Walk  
London SE5 8SP  
020 3318 8900

[www.mundays.com](http://www.mundays.com)

MUNDAY'S

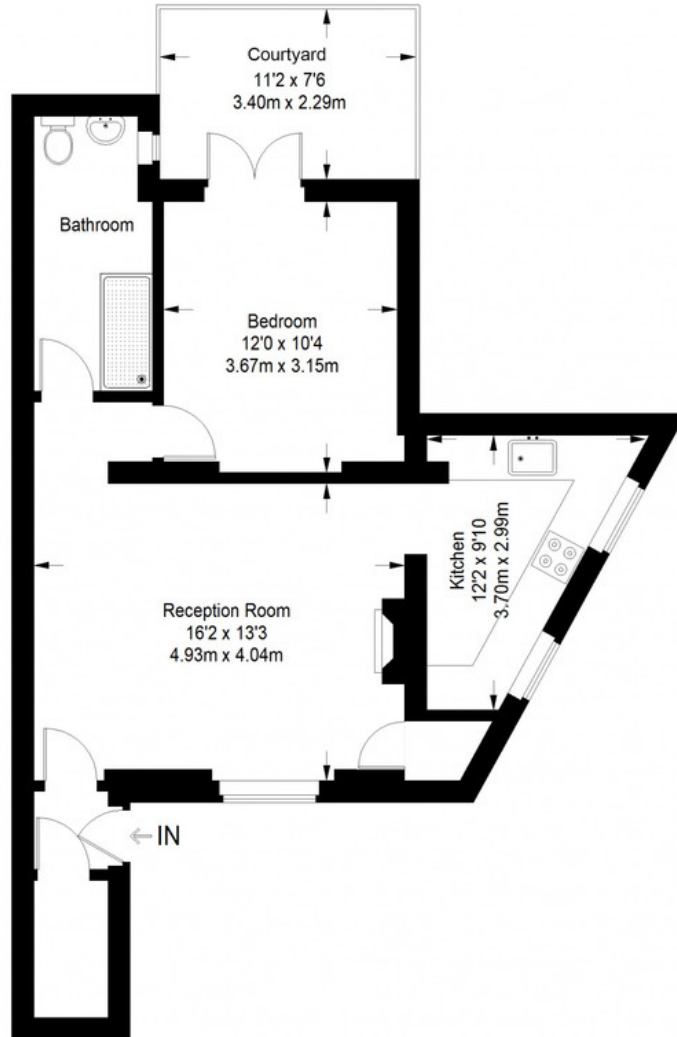


*Munday's Estate Agents Ltd.*  
2 Mary Boast Walk  
London SE5 8SP  
020 3318 8900

[www.mundays.com](http://www.mundays.com)

**MUNDAY'S**

**Manor Avenue**



**Lower Ground Floor = 610 sq ft**

Approximate Gross Internal Area  
LOWER GROUND FLOOR = 610 sq ft / 56.67 sq m  
Total = 610 sq ft / 56.67 sq m



This plan is for layout guidance only. Not drawn to scale unless stated. Windows and door openings are approximate. Whilst every care is taken in the preparation of this plan, please check all dimensions, shapes and compass bearings before making any decisions reliant upon them. (ID357409)

*Munday's Estate Agents Ltd.*  
2 Mary Boast Walk  
London SE5 8SP  
020 3318 8900

[www.mundays.com](http://www.mundays.com)