

MUNDAY'S

Lyndhurst Way, Peckham Rye

£2,000,000



Substantial, light and very lovely mid-C19th house with five bedrooms, within Holly Grove Conservation Area, just a few minutes from Peckham Rye Station, Bellenden Road and Warwick Gardens.

Over four full charm-packed floors, this dream of a home measures in at 2651 square feet - you've got four double bedrooms plus a single/study, two bathrooms and a shower room, generous reception spaces to the two lower floors, and two entrances. The house is rich in period features - our favourites include the property's curved back, the stack of front bay windows, and the multitude of original fireplaces with marble surrounds.

A handsome and mature east-facing garden (which allows for lots of privacy - other gardens surrounding yours) completes the package, with both native and tropical planting.

Munday's Estate Agents Ltd.
2 Mary Boast Walk
London SE5 8SP
020 3318 8900

www.mundays.com

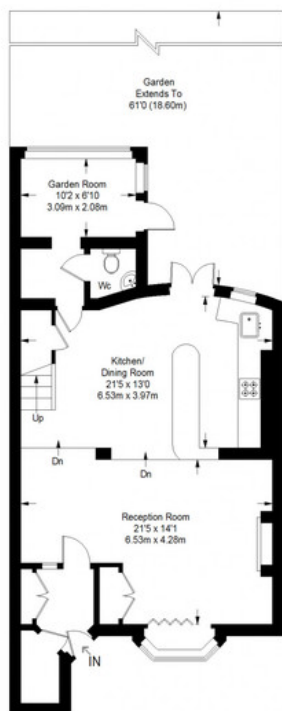
MUNDAY'S



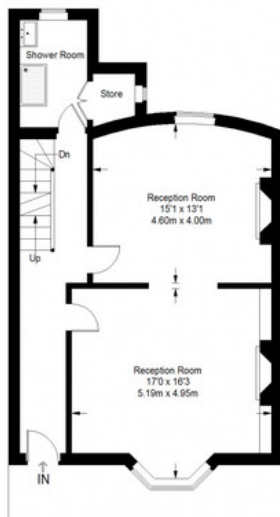
Munday's Estate Agents Ltd.
2 Mary Boast Walk
London SE5 8SP
020 3318 8900

www.mundays.com

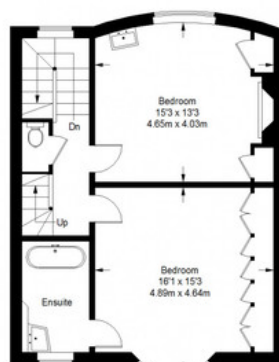
Lyndhurst Way



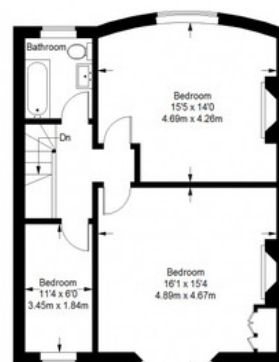
Lower Ground Floor = 761 sq ft



Raised Ground Floor = 684 sq ft



First Floor = 603 sq ft



Ground Floor = 603 sq ft

Approximate Gross Internal Area
 LOWER GROUND FLOOR = 761 sq ft / 70.70 sq m
 RAISED GROUND FLOOR = 684 sq ft / 63.54 sq m
 FIRST FLOOR = 603 sq ft / 56.02 sq m
 SECOND FLOOR = 603 sq ft / 56.02 sq m
 Total = 2651 sq ft / 246.28 sq m



This plan is for layout guidance only. Not drawn to scale unless stated. Windows and door openings are approximate. Whilst every care is taken in the preparation of this plan, please check all dimensions, shapes and compass bearings before making any decisions reliant upon them. (E0357409)