

MUNDAY'S

Lugard Road, Peckham

£475,000



Offers in excess of £475,000.

Two bed first floor Victorian conversion flat on a pleasant residential Peckham back street. Share of Freehold.

The location is the southerly-side of Queens Road. You're just a five minute walk from Queens Road Peckham Station, for regular and Overground services. Nunhead and Peckham Rye stations are also within a 15 minute walk.

Nunhead Green and Conservation Area - with popular village-vibe high street area - is a 10 minute stroll.

Munday's Estate Agents Ltd.
2 Mary Boast Walk
London SE5 8SP
020 3318 8900

www.mundays.com

MUNDAY'S

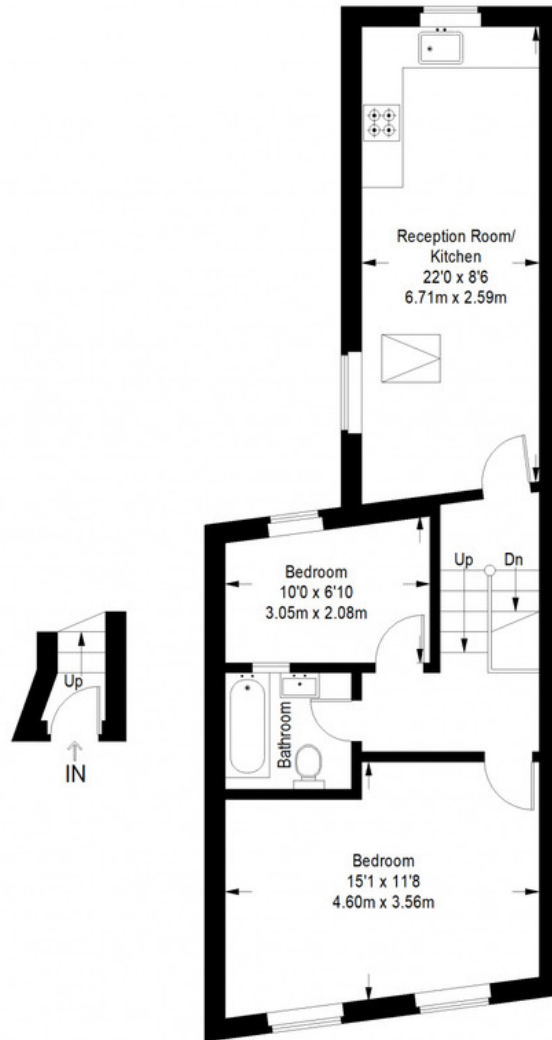


Munday's Estate Agents Ltd.
2 Mary Boast Walk
London SE5 8SP
020 3318 8900

www.mundays.com

MUNDAY'S

Lugard Road



Ground Floor
Entrance = 14 sq ft

First Floor = 543 sq ft

Approximate Gross Internal Area
GROUND FLOOR ENTRANCE = 14 sq ft / 1.30 sq m
FIRST FLOOR = 543 sq ft / 50.44 sq m
Total = 557 sq ft / 51.75 sq m



This plan is for layout guidance only. Not drawn to scale unless stated. Windows and door openings are approximate. Whilst every care is taken in the preparation of this plan, please check all dimensions, shapes and compass bearings before making any decisions reliant upon them. (ID357409)

Munday's Estate Agents Ltd.
2 Mary Boast Walk
London SE5 8SP
020 3318 8900

www.mundays.com