

MUNDAY'S

Lowther Hill, Honor Oak

£600,000



Offers in excess of £600,000.

Gorgeous south-facing garden flat (with direct and side access) with pleasing high ceilings and two really generous double bedrooms.

Find the flat on the ground floor of a converted detached red-brick Victorian house. Enjoy your own front door and a Freehold-share.

There is potential to extend at the rear into the garden if you so-desired. Many of the neighbours have done so.

The location is a wide residential gentle hill near Blythe Hill Fields, with unrestricted parking on-street. You are just a seven minute walk from Honor Oak Park Station (three stops to London Bridge, or jump on the Overground line here).

Munday's Estate Agents Ltd.
2 Mary Boast Walk
London SE5 8SP
020 3318 8900

www.mundays.com

MUNDAY'S

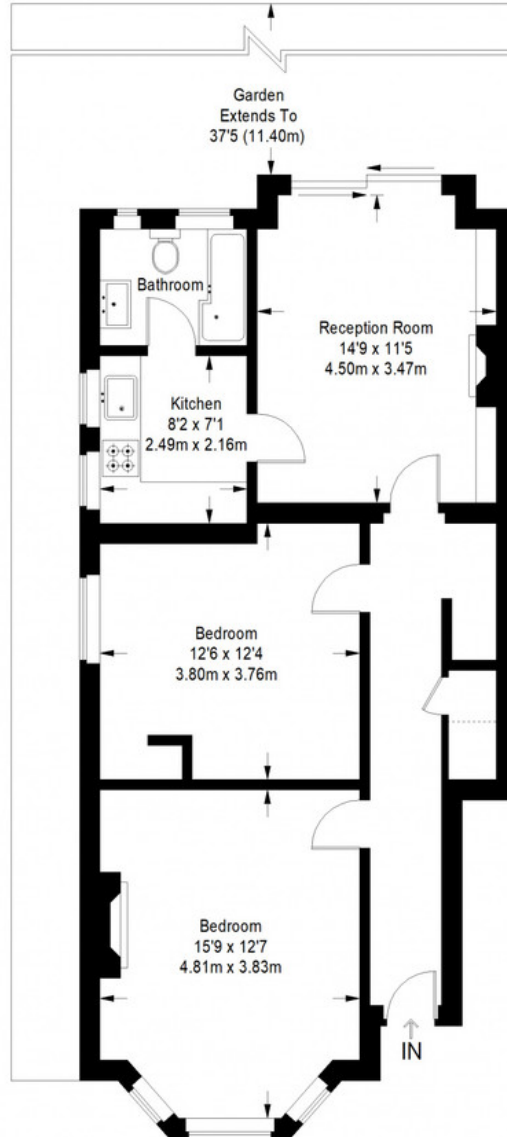


Munday's Estate Agents Ltd.
2 Mary Boast Walk
London SE5 8SP
020 3318 8900

www.mundays.com

MUNDAY'S

Lowther Hill



Ground Floor = 749 sq ft

Approximate Gross Internal Area
GROUND FLOOR = 749 sq ft / 70 sq m
Total = 749 sq ft / 70 sq m



This plan is for layout guidance only. Not drawn to scale unless stated. Windows and door openings are approximate. Whilst every care is taken in the preparation of this plan, please check all dimensions, shapes and compass bearings before making any decisions reliant upon them. (ID357409)

Munday's Estate Agents Ltd.
2 Mary Boast Walk
London SE5 8SP
020 3318 8900

www.mundays.com