

MUNDAY'S

Lordship Lane, East Dulwich

£725,000



Big, bright and chain free two bedroom pad - delivered over two floors - with good storage and double-glazing, in a winning-at-life spot on East Dulwich's delightful and well-stocked high street, and a minute from its Saturday market offshoot: North Cross Road.

Walk just eight minutes to East Dulwich Station. There are good bus routes on your doorstep as well, including the 185 (Lewisham>Victoria).

Your new home or investment property has been tastefully and thoroughly refurbished and redecorated to a high standard. You needn't lift a finger!

*Munday's Estate Agents Ltd.*  
2 Mary Boast Walk  
London SE5 8SP  
020 3318 8900

[www.mundays.com](http://www.mundays.com)

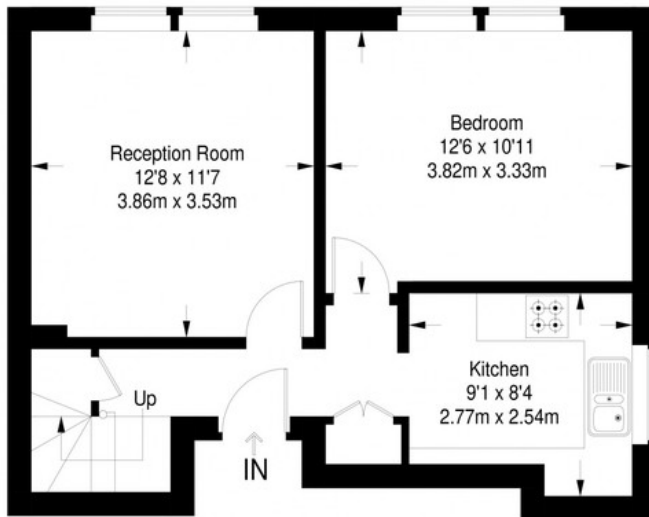
MUNDAY'S



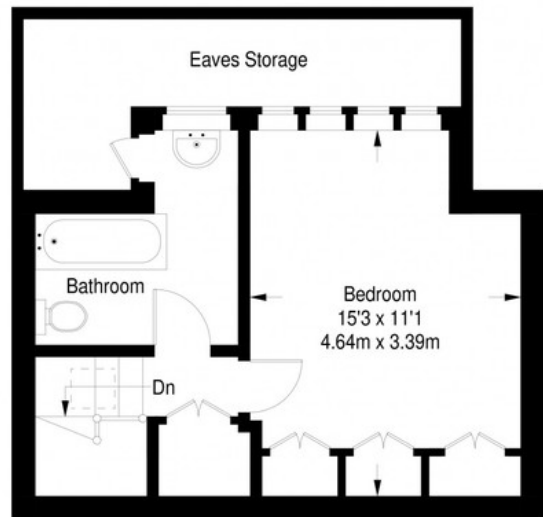
*Munday's Estate Agents Ltd.*  
2 Mary Boast Walk  
London SE5 8SP  
020 3318 8900

[www.mundays.com](http://www.mundays.com)

## Lordship Lane



**First Floor = 444 sq ft**



**Second Floor = 276 sq ft**

Approximate Gross Internal Area  
FIRST FLOOR = 444 sq ft / 41.25 sq m  
SECOND FLOOR = 276 sq ft / 25.64 sq m  
Total = 720 sq ft / 66.89 sq m



This plan is for layout guidance only. Not drawn to scale unless stated. Windows and door openings are approximate. Whilst every care is taken in the preparation of this plan, please check all dimensions, shapes and compass bearings before making any decisions reliant upon them. (ID357409)