

## Linwood Close, Camberwell

£525,000



Big and bright second floor apartment of 752 square feet, with two bedrooms, a Freehold-share, and a designated parking bay.

Delivered over one floor with a great layout, your new home is located in a notably leafy spot within a low-rise purpose-built private development, set in well-established and well-tended communal grounds (in a cute cul de sac setting off glorious Grove Park) - these even boast a mature woodland and communal BBQ area!

Stations? Peckham Rye and Denmark Hill (both Fare Zone 2) are your closest. Walk just 10 and 12 minutes to these, for both regular and Windrush line services.

MUNDAY'S

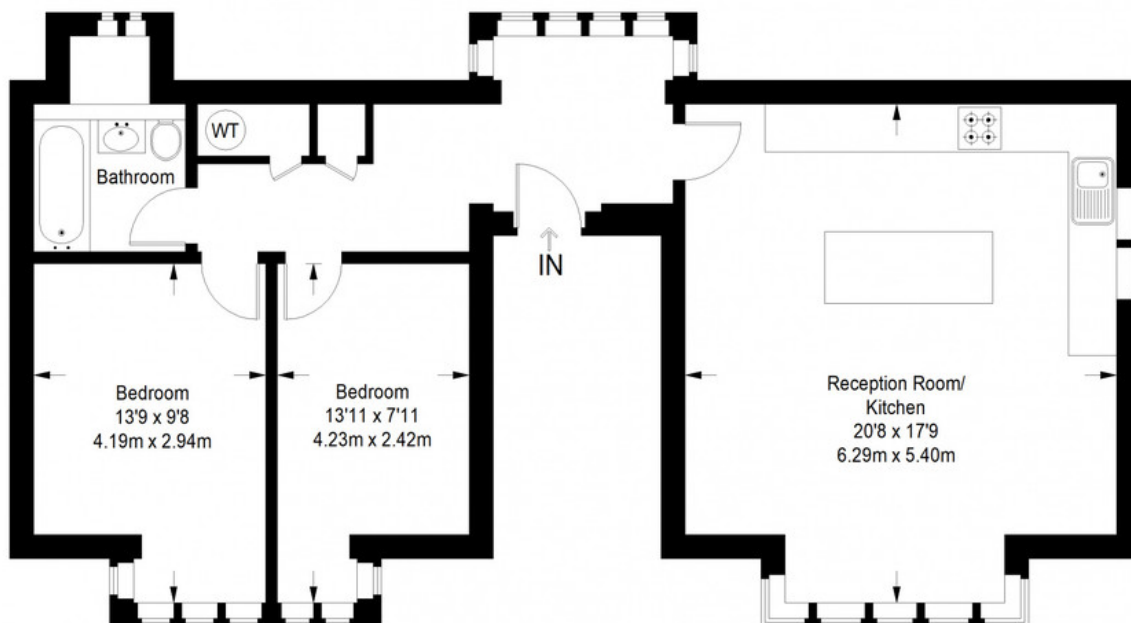


*Munday's Estate Agents Ltd.*  
2 Mary Boast Walk  
London SE5 8SP  
020 3318 8900

[www.mundays.com](http://www.mundays.com)

MUNDAY'S

## Linwood Close



**Second Floor = 752 sq ft**

Approximate Gross Internal Area  
SECOND FLOOR = 752 sq ft / 70 sq m  
Total = 752 sq ft / 70 sq m



This plan is for layout guidance only. Not drawn to scale unless stated. Windows and door openings are approximate. Whilst every care is taken in the preparation of this plan, please check all dimensions, shapes and compass bearings before making any decisions reliant upon them. (ID357409)

*Munday's Estate Agents Ltd.*  
2 Mary Boast Walk  
London SE5 8SP  
020 3318 8900

[www.mundays.com](http://www.mundays.com)