

## Linwood Close, Camberwell

£499,950



Big, bright, just-refurbished and double-glazed apartment over two floors, with a Freehold-share and a designated parking bay to the front of your building.

The pleasing pad is located within a low-rise purpose-built private development, which rests in well-established and well-tended communal grounds (in a super cute cul de sac setting, off glorious Grove Park); these even boast a mature woodland and communal BBQ area.

Stations? Peckham Rye and Denmark Hill (both Fare Zone 2) are your closest. Walk just 10 and 12 minutes to these, for regular and London Overground Windrush line services.

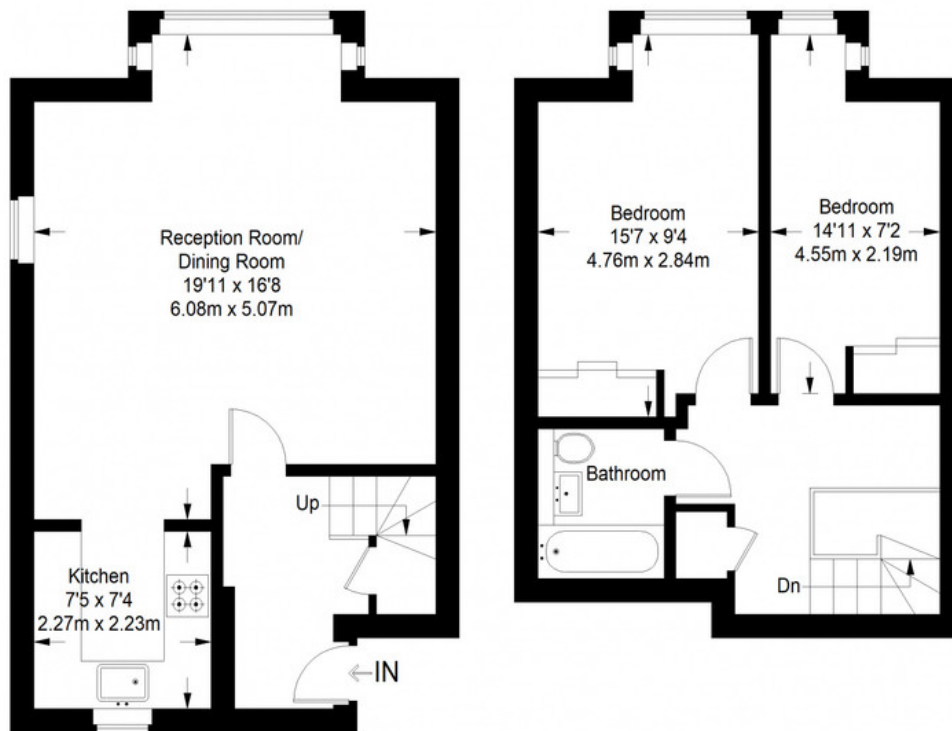
MUNDAY'S



*Munday's Estate Agents Ltd.*  
2 Mary Boast Walk  
London SE5 8SP  
020 3318 8900

[www.mundays.com](http://www.mundays.com)

## Linwood Close



**Second Floor = 430 sq ft**

**Third Floor = 369 sq ft**

Approximate Gross Internal Area  
 SECOND FLOOR = 430 sq ft / 39.95 sq m  
 THIRD FLOOR = 369 sq ft / 34.28 sq m  
 Total = 799 sq ft / 74.23 sq m



This plan is for layout guidance only. Not drawn to scale unless stated. Windows and door openings are approximate. Whilst every care is taken in the preparation of this plan, please check all dimensions, shapes and compass bearings before making any decisions reliant upon them. (ID357409)