

MUNDAY'S

Lewisham Way, Brockley

£380,000



Offers in excess of £380,000.

Charming second floor conversion flat, set within a grand Victorian semi-detached house directly opposite Memorial Gardens (with delightful regular floral displays).

A large communal garden is set to the rear of the building - accessed via a gate at the side of the house. You have off-street parking to the front.

You are just a few minutes from St. Johns Station (and 15 from Brockley and New Cross stations), and near Brockley Market - a super foodie one which runs on Saturdays 10am-2pm.

Munday's Estate Agents Ltd.
2 Mary Boast Walk
London SE5 8SP
020 3318 8900

www.mundays.com

MUNDAY'S

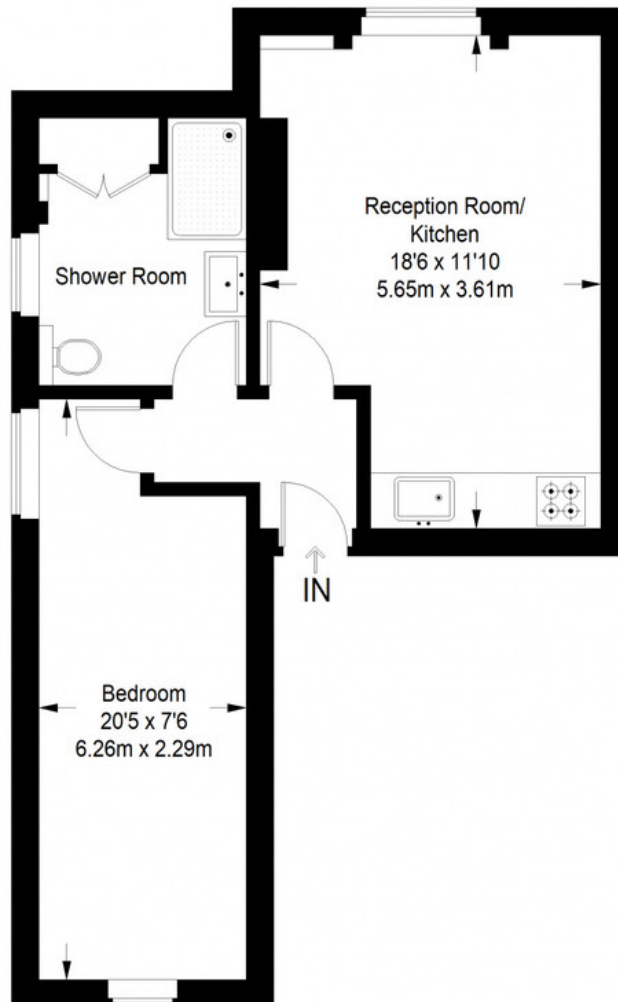


Munday's Estate Agents Ltd.
2 Mary Boast Walk
London SE5 8SP
020 3318 8900

www.mundays.com

MUNDAY'S

Lewisham Way



Second Floor = 448 sq ft

Approximate Gross Internal Area
SECOND FLOOR = 448 sq ft / 41.62 sq m
Total = 448 sq ft / 41.62 sq m



This plan is for layout guidance only. Not drawn to scale unless stated. Windows and door openings are approximate. Whilst every care is taken in the preparation of this plan, please check all dimensions, shapes and compass bearings before making any decisions reliant upon them. (ID357409)

Munday's Estate Agents Ltd.
2 Mary Boast Walk
London SE5 8SP
020 3318 8900

www.mundays.com