

MUNDAY'S

Langford Green, Camberwell

£950,000



Offers in excess of £950,000.

Rarely-available and chain free four double bedroom maisonette over first and second floors (with entrance and utility at ground floor level) of 1189 square feet, with a Freehold-share.

The style of the property is also a rarity; enjoy a sunny southwesterly-facing balcony on the first floor (pleasingly the width of the property) overlooking well-maintained, mature communal gardens.

You are close to both East Dulwich and Denmark Hill stations (six and eight minutes by foot respectively), and excellent bus routes on Dog Kennel Hill, and there is parking for residents. You are winning-at-life close to excellent nursery, primary and secondary schools, plus fabulous parks and green spaces.

*Munday's Estate Agents Ltd.*  
2 Mary Boast Walk  
London SE5 8SP  
020 3318 8900

[www.mundays.com](http://www.mundays.com)

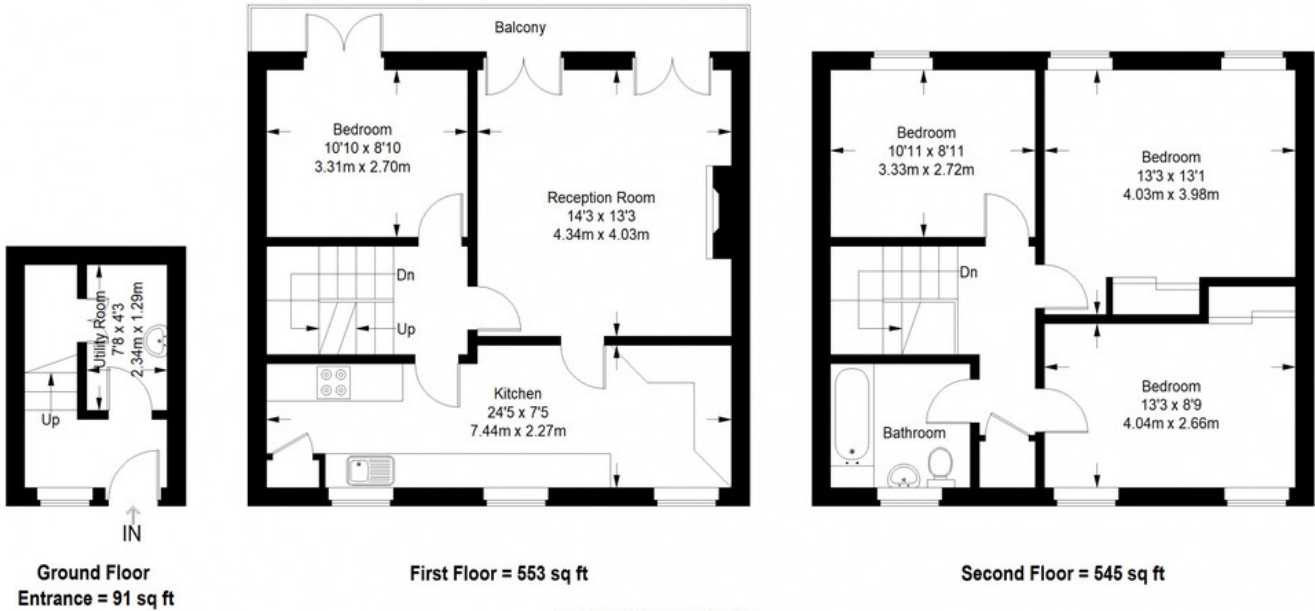
MUNDAY'S



*Munday's Estate Agents Ltd.*  
2 Mary Boast Walk  
London SE5 8SP  
020 3318 8900

[www.mundays.com](http://www.mundays.com)

## Langford Green



Approximate Gross Internal Area  
 GROUND FLOOR ENTRANCE = 91 sq ft / 8.45 sq m  
 FIRST FLOOR = 553 sq ft / 51.37 sq m  
 SECOND FLOOR = 545 sq ft / 50.63 sq m  
 Total = 1189 sq ft / 110.46 sq m



This plan is for layout guidance only. Not drawn to scale unless stated. Windows and door openings are approximate. Whilst every care is taken in the preparation of this plan, please check all dimensions, shapes and compass bearings before making any decisions reliant upon them. (ID357409)