

MUNDAY'S

Kirkwood Road, Nunhead

£899,950



Viewings commence Saturday 27th of June.

Excellent extended three bedroom mid-terrace of 1166 square feet, with a landscaped garden extending 40 feet, in an enviable position very close to Nunhead's villagey shops, Green and Conservation Area. Chain free.

For stations, you are positioned between a choice of three! Nunhead (walk seven minutes), Queen's Road Peckham (12) and Peckham Rye (15). All are Fare Zone 2 and the latter two offer Windrush line services in addition to regular rail ones. Parking is currently unrestricted, on-street.

Munday's Estate Agents Ltd.
2 Mary Boast Walk
London SE5 8SP
020 3318 8900

www.mundays.com

MUNDAY'S

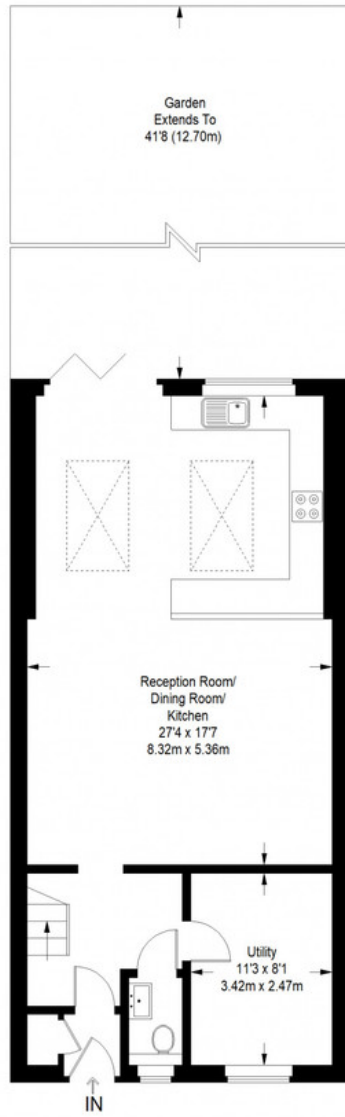


Munday's Estate Agents Ltd.
2 Mary Boast Walk
London SE5 8SP
020 3318 8900

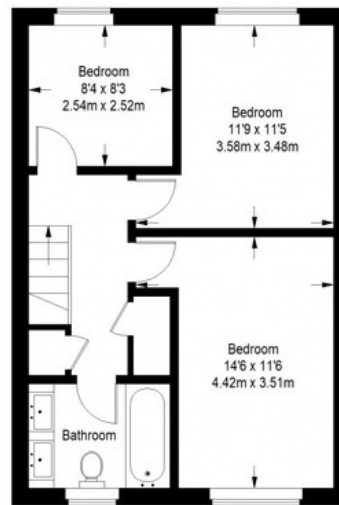
www.mundays.com

MUNDAY'S

Kirkwood Road



Ground Floor = 689 sq ft



First Floor = 477 sq ft

Approximate Gross Internal Area
GROUND FLOOR = 689 sq ft / 64.01 sq m
FIRST FLOOR = 477 sq ft / 44.31 sq m
Total = 1166 sq ft / 108.32 sq m



This plan is for layout guidance only. Not drawn to scale unless stated. Windows and door openings are approximate. Whilst every care is taken in the preparation of this plan, please check all dimensions, shapes and compass bearings before making any decisions reliant upon them. (ID357409)

Munday's Estate Agents Ltd.
2 Mary Boast Walk
London SE5 8SP
020 3318 8900

www.mundays.com