

Kinsale Road, Peckham Rye

£699,950



Impressive modern-build two bed apartment of 787 square feet, with double-glazing, recessed lighting, both bath and shower rooms, and its own private and generous courtyard garden. Owned just once, the flat is in great turnkey condition.

Kinsale Road rests just off Peckham Rye - so you'll enjoy a seriously enviable position, right by Peckham Rye Park and Common's 113 acres. Peckham Rye Station is a 10 minute walk and it's 15 to East Dulwich Station.

MUNDAY'S

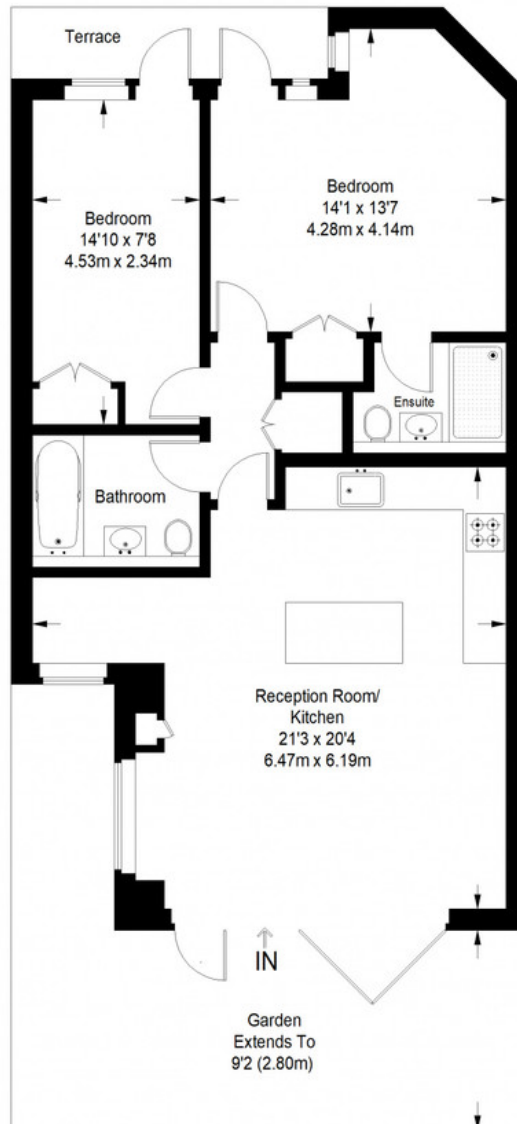


Munday's Estate Agents Ltd.
2 Mary Boast Walk
London SE5 8SP
020 3318 8900

www.mundays.com

MUNDAY'S

Kinsale Road



Ground Floor = 787 sq ft

Approximate Gross Internal Area
GROUND FLOOR = 787 sq ft / 73.11 sq m
Total = 787 sq ft / 73.11 sq m



This plan is for layout guidance only. Not drawn to scale unless stated. Windows and door openings are approximate. Whilst every care is taken in the preparation of this plan, please check all dimensions, shapes and compass bearings before making any decisions reliant upon them. (ID357409)

Munday's Estate Agents Ltd.
2 Mary Boast Walk
London SE5 8SP
020 3318 8900

www.mundays.com