

MUNDAY'S

Kings Grove, Peckham

£1,300,000



Architecturally-treated four bed, two bath optimized Victorian terrace of 1947 square feet (that's excluding the garden studio and eaves storage!). A delightful east-facing garden completes the attractive package.

Find your new address on a quiet and tree-lined no-through street which places you winning-at-life close to Queens Road Peckham Station (you are only a few minutes from the platform!) and the cool local independent businesses which hug it.

Munday's Estate Agents Ltd.
2 Mary Boast Walk
London SE5 8SP
020 3318 8900

www.mundays.com

MUNDAY'S

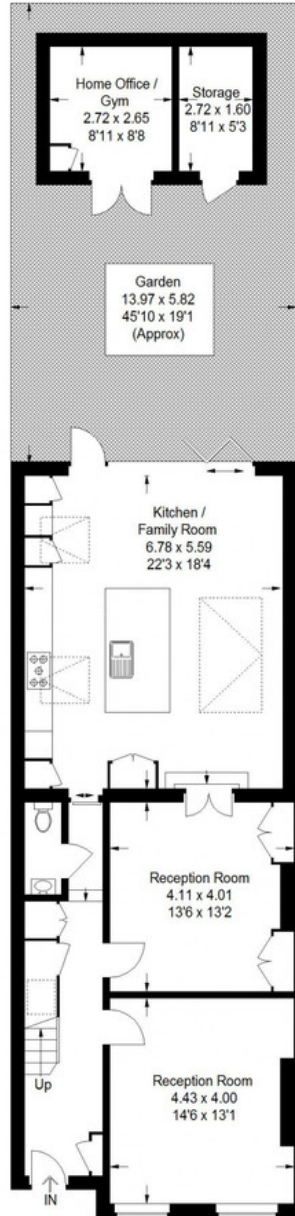


Munday's Estate Agents Ltd.
2 Mary Boast Walk
London SE5 8SP
020 3318 8900

www.mundays.com

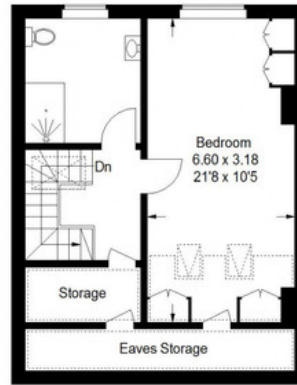
26 Kings Grove, SE15

Approximate Gross Internal Area
(Excluding Outbuilding / Eaves Storage)
180.9 sq m / 1947 sq ft

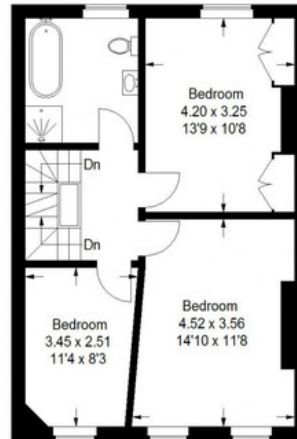


Ground Floor

= Reduced headroom below 1.5 m / 5'0



Second Floor



First Floor

This plan is for layout guidance only. Not drawn to scale unless stated. Windows and door openings are approximate. Whilst every care is taken in the preparation of this plan, please check all dimensions, shapes and compass bearings before making any decisions reliant upon them. (ID1310344)