

MUNDAY'S

Kings Grove, Peckham

£399,950



Spacious one bedroom Victorian conversion flat of 524 square feet, with its own front door, a Freehold-share, and its own private west-facing garden. You can be organising that housewarming BBQ very soon as the property is pleasingly being sold without a chain.

Your new address is a quiet, tree-lined, no-through street, which places you gleefully close to Queens Road Peckham Station (you are three minutes from the platform!) and the cool local independent businesses which surround it.

Additionally, there are brilliant bus routes at the top of your street, and Peckham Rye Station is a 13 minute stroll.

Munday's Estate Agents Ltd.
2 Mary Boast Walk
London SE5 8SP
020 3318 8900

www.mundays.com

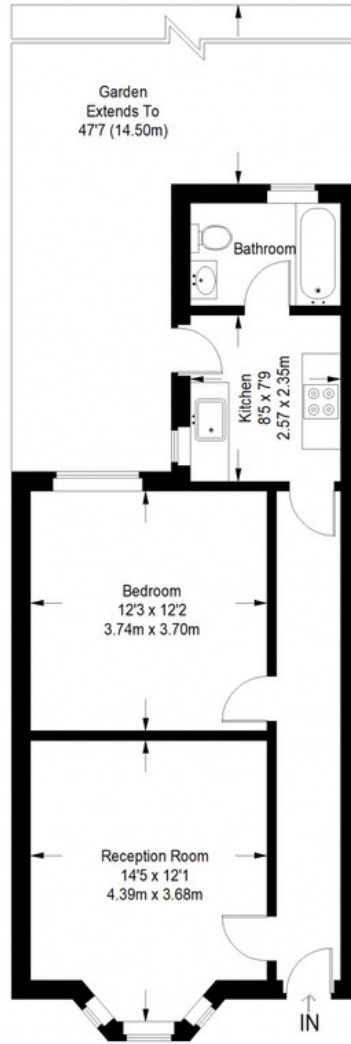
MUNDAY'S



Munday's Estate Agents Ltd.
2 Mary Boast Walk
London SE5 8SP
020 3318 8900

www.mundays.com

Kings Grove



Lower Ground Floor = 524 sq ft

Approximate Gross Internal Area
LOWER GROUND FLOOR = 524 sq ft / 49 sq m
Total = 524 sq ft / 49 sq m

This plan is for layout guidance only. Not drawn to scale unless stated. Windows and door openings are approximate. Whilst every care is taken in the preparation of this plan, please check all dimensions, shapes and compass bearings before making any decisions reliant upon them. (ID357409)