

## Kings Grove, Peckham

£485,000



Delightful and freshly-renovated two bedroom first (top) floor Victorian conversion flat, on a quiet and tree-lined no-through street which puts you really close to Queens Road Peckham Station (walk just three minutes, or you are 13 from Peckham Rye Station).

There are just three flats in the building, and the loft space is pleasingly demised to this flat.

MUNDAY'S

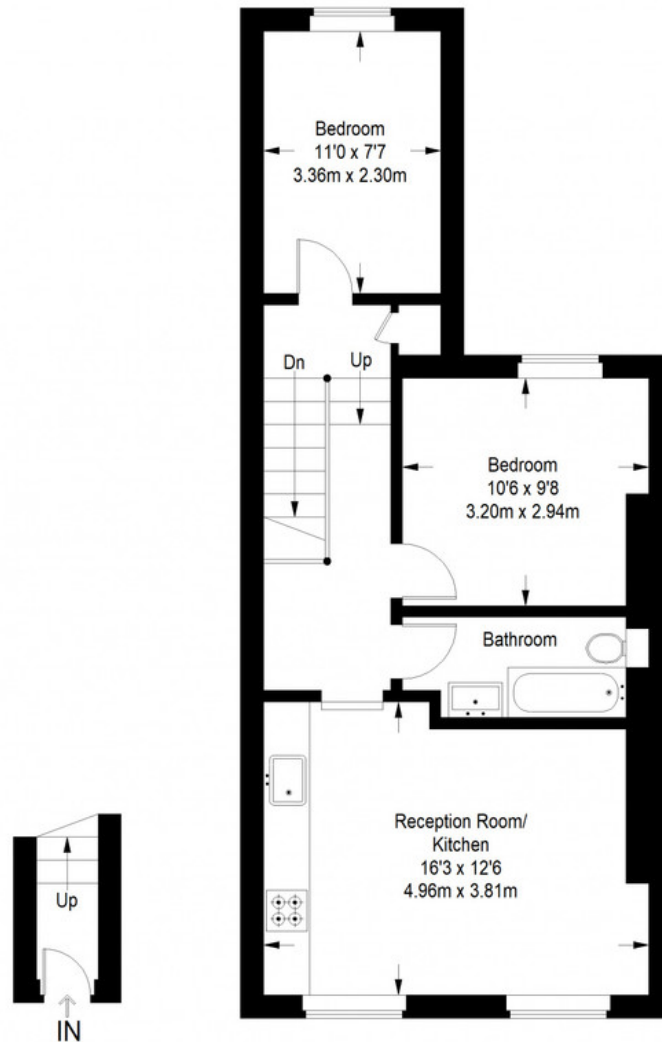


*Munday's Estate Agents Ltd.*  
2 Mary Boast Walk  
London SE5 8SP  
020 3318 8900

[www.mundays.com](http://www.mundays.com)



## Kings Grove



**Ground Floor**  
**Entrance = 19 sq ft**

**First Floor = 542 sq ft**

Approximate Gross Internal Area  
GROUND FLOOR = 19 sq ft / 1.77 sq m  
FIRST FLOOR = 542 sq ft / 50.35 sq m  
Total = 561 sq ft / 52.12 sq m



This plan is for layout guidance only. Not drawn to scale unless stated. Windows and door openings are approximate. Whilst every care is taken in the preparation of this plan, please check all dimensions, shapes and compass bearings before making any decisions reliant upon them. (ID357409)