

MUNDAY'S

Kelvington Road, Nunhead

£925,000



Architecturally-treated and totally charming three bedroom twenties house, on a quiet residential back street. A beautiful south-east facing rear garden seals the deal. You have a very pretty cottage-style front garden as well.

The characterful property is one of the 'homes for heroes' houses; built in the 1920's for people returning from WW1.

This is such a quiet yet well-connected locale, and puts you a short stroll from the small town centres of Nunhead, East Dulwich, Peckham and Brockley.

And what a green spot! You are really close to the delightful public spaces of Brenchley Gardens, One Tree Hill, Peckham Rye Park and Common, and Nunhead and Camberwell New cemeteries. Also nearby is Aquarius Golf Club (a unique 9-hole one; run by volunteers).

*Munday's Estate Agents Ltd.*  
2 Mary Boast Walk  
London SE5 8SP  
020 3318 8900

[www.mundays.com](http://www.mundays.com)

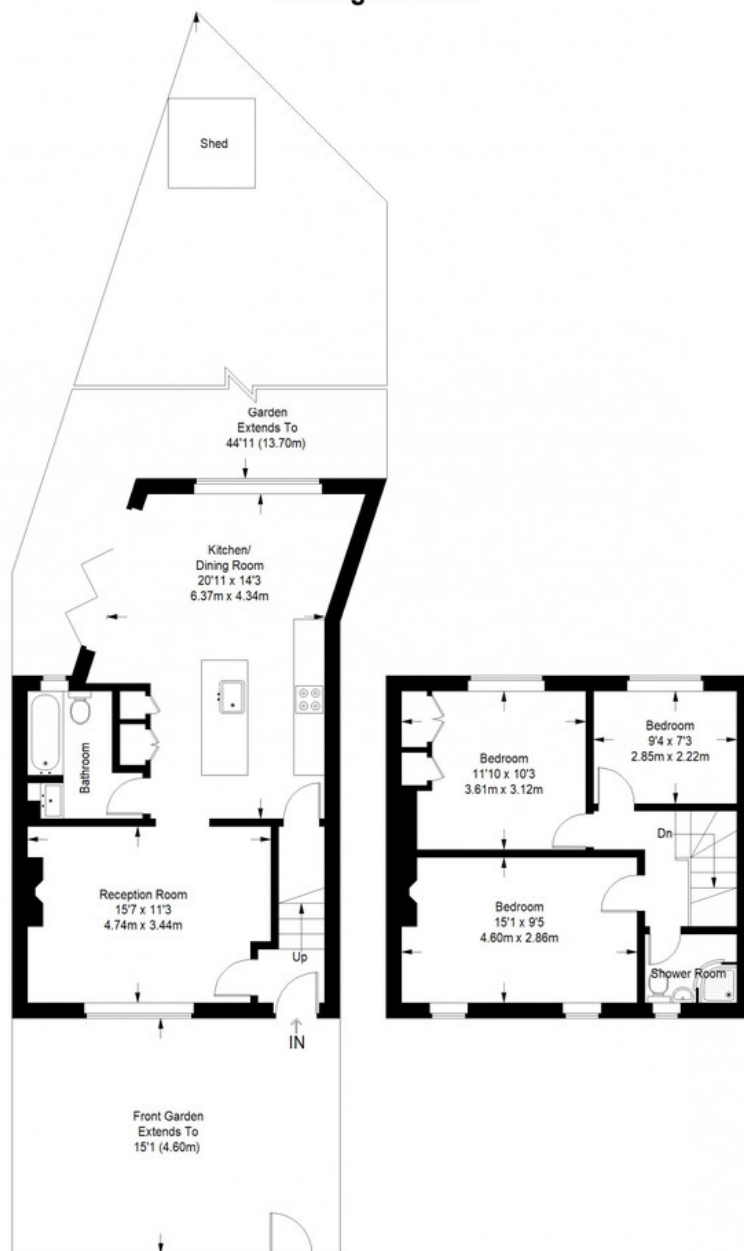
MUNDAY'S



*Munday's Estate Agents Ltd.*  
2 Mary Boast Walk  
London SE5 8SP  
020 3318 8900

[www.mundays.com](http://www.mundays.com)

Kelvington Road



Ground Floor = 569 sq ft

First Floor = 433 sq ft

Approximate Gross Internal Area  
GROUND FLOOR = 569 sq ft / 52.86 sq m  
FIRST FLOOR = 433 sq ft / 40.23 sq m  
Total = 1002 sq ft / 93.09 sq m



This plan is for layout guidance only. Not drawn to scale unless stated. Windows and door openings are approximate. Whilst every care is taken in the preparation of this plan, please check all dimensions, shapes and compass bearings before making any decisions reliant upon them. (ID357409)