

MUNDAY'S

Jerningham Road, New Cross

£575,000



Architecturally-treated two double bedroom conversion apartment within a classic bay-fronted Victorian Telegraph Hill Conservation Area semi. Pleasingly, new timber double-glazed sash windows were installed throughout, last year.

The bright and smart apartment enjoys a Freehold-share and a leafy residential position near TH's Lower (hillside) Park.

Walk just five minutes to New Cross Gate Station (one stop to London Bridge), 12 minutes to Brockley Station, and 14 to Nunhead Station. Parking is unrestricted, on-street.

Munday's Estate Agents Ltd.
2 Mary Boast Walk
London SE5 8SP
020 3318 8900

www.mundays.com

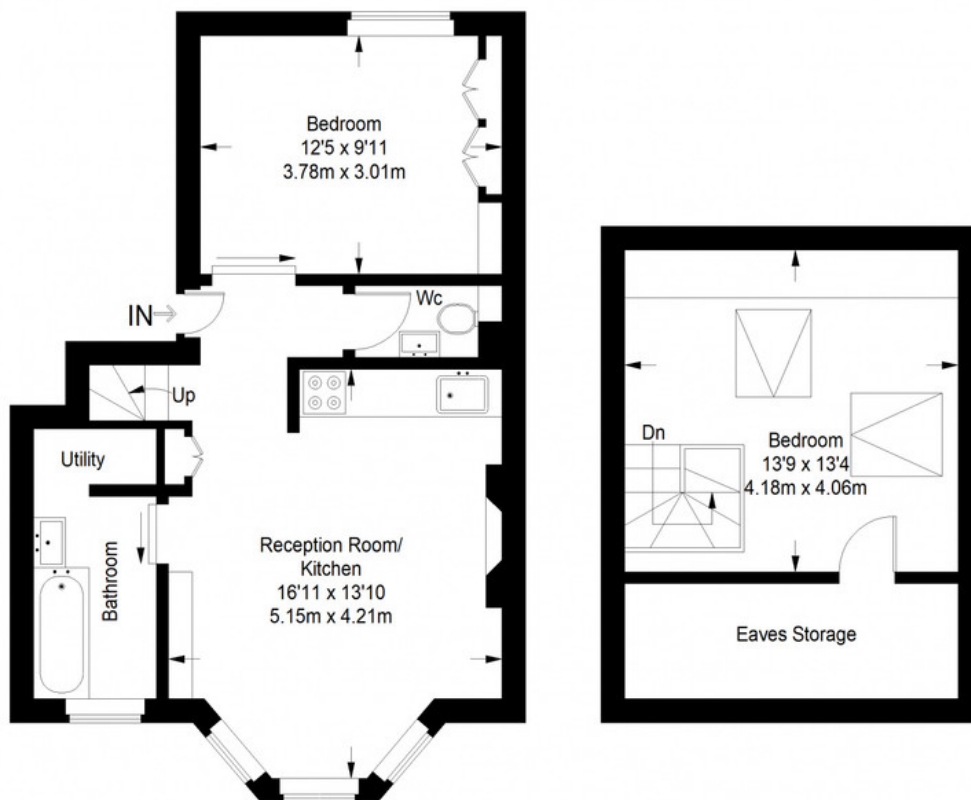
MUNDAY'S



Munday's Estate Agents Ltd.
2 Mary Boast Walk
London SE5 8SP
020 3318 8900

www.mundays.com

Jerningham Road



First Floor = 454 sq ft

Second Floor = 183 sq ft

Approximate Gross Internal Area
 FIRST FLOOR = 454 sq ft / 42.18 sq m
 SECOND FLOOR (EXCLUDING EAVES STORAGE) = 183 sq ft / 17.00 sq m
 Total = 637 sq ft / 59.18 sq m



This plan is for layout guidance only. Not drawn to scale unless stated. Windows and door openings are approximate. Whilst every care is taken in the preparation of this plan, please check all dimensions, shapes and compass bearings before making any decisions reliant upon them. (ID357409)