

Ivydale Road, Nunhead

£599,950



Spacious and bright two double bedroom ground floor Victorian conversion flat of 647 square feet, with a properly lovely SW-facing private garden (complete with home office/garden studio – which pleasingly backs onto the mature greenery of Nunhead Cemetery). A useful storage cellar completes the package.

Your part-walled, suntrap-status garden has two access points: from the kitchen/reception, and from your second bedroom. Nice!

A fab flat, and a leafy yet well-connected spot to boot. You are just a four minute walk from Nunhead Station (or walk to Queens Road Peckham or Brockley stations in 15). This trio are all Fare Zone 2.

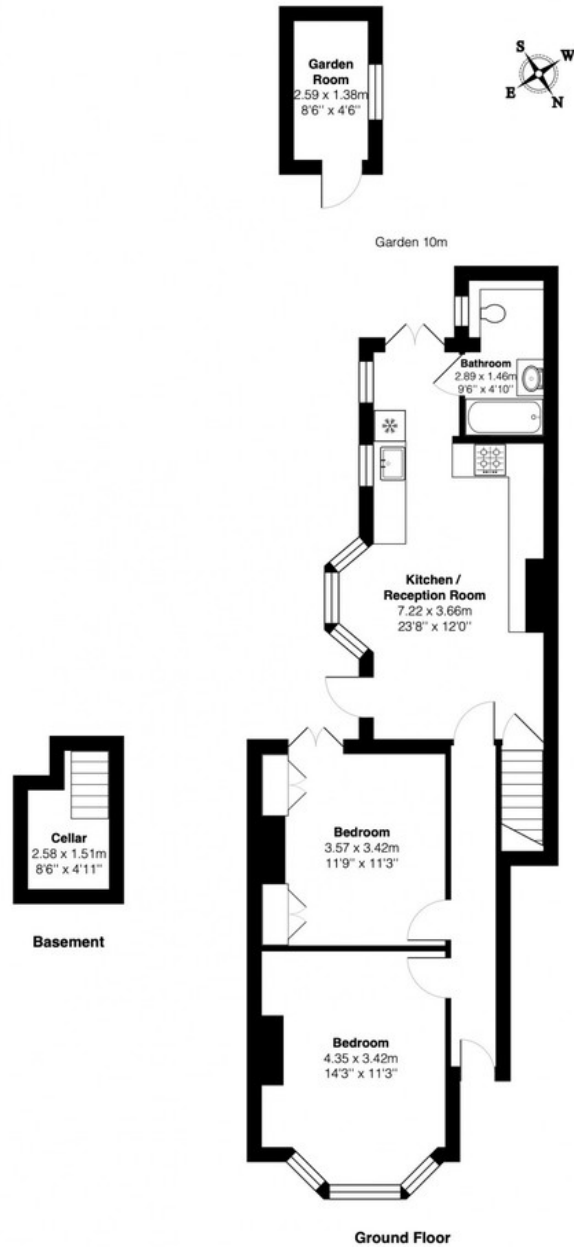
MUNDAY'S



Munday's Estate Agents Ltd.
2 Mary Boast Walk
London SE5 8SP
020 3318 8900

www.mundays.com

MUNDAY'S



Total Area: 60.1 m² ... 647 ft² (excluding cellar, garden room)

All measurements are approximate and for display purposes only

Munday's Estate Agents Ltd.
2 Mary Boast Walk
London SE5 8SP
020 3318 8900

www.mundays.com