

Ivydale Road, Nunhead

£450,000



Gorgeous first floor Victorian conversion flat of 685 square feet on a residential Nunhead street, just five minutes from Nunhead station.

The flat is in immaculate order (it is so beautifully decorated and appointed!) with pleasingly-spacious rooms, and has pretty, green playing-field views from the rear of the property. Parking is unrestricted on the street. Leasehold.

MUNDAY'S

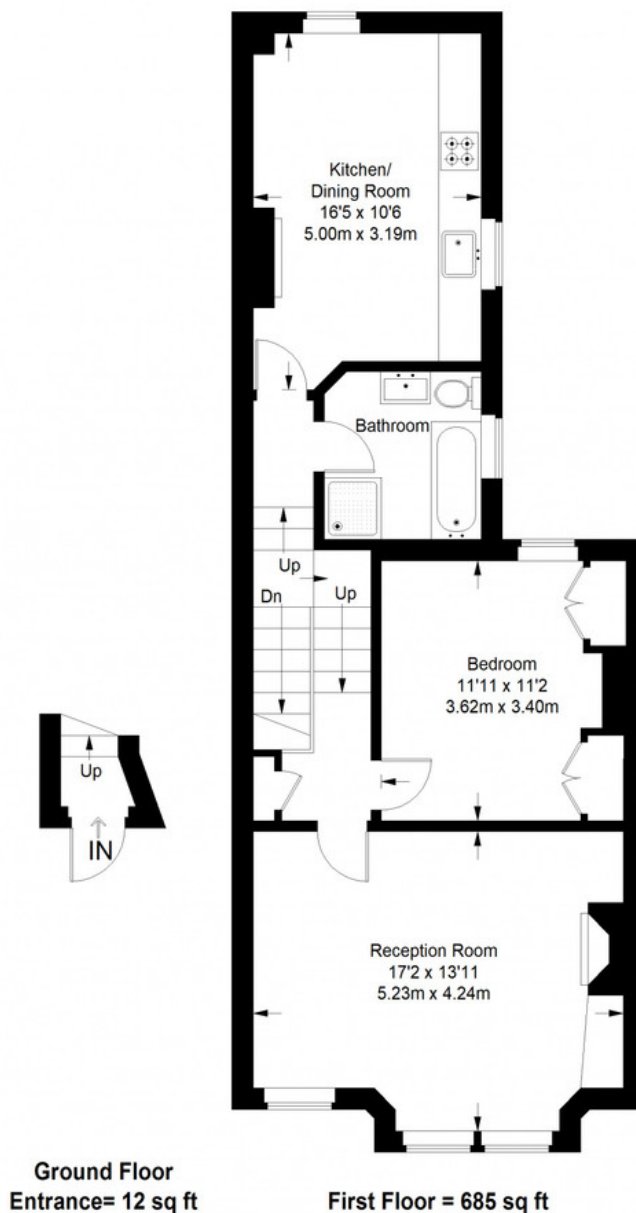


Munday's Estate Agents Ltd.
2 Mary Boast Walk
London SE5 8SP
020 3318 8900

www.mundays.com

MUNDAY'S

Ivydale Road



Approximate Gross Internal Area
GROUND FLOOR ENTRANCE = 12 sq ft / 1.11 sq m
FIRST FLOOR = 685 sq ft / 63.64 sq m
Total = 697 sq ft / 64.75 sq m



This plan is for layout guidance only. Not drawn to scale unless stated. Windows and door openings are approximate. Whilst every care is taken in the preparation of this plan, please check all dimensions, shapes and compass bearings before making any decisions reliant upon them. (ID357409)

Munday's Estate Agents Ltd.
2 Mary Boast Walk
London SE5 8SP
020 3318 8900

www.mundays.com