

MUNDAY'S

Ivydale Road, Nunhead

£600,000



Offers in excess of £600,000.

Big, bright and high-ceilinged two double bedroom ground floor Victorian conversion flat that's just a four minute walk from Nunhead Station (or walk to Queens Road Peckham Station in 15).

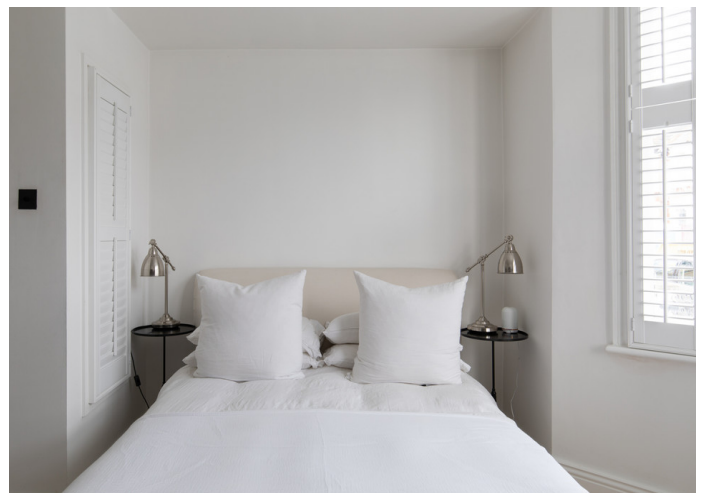
The pleasing pad is accompanied by a delightful south-west facing private garden (hello, sunshine!) which is framed by greenery on all boundaries, and has direct access from both the kitchen and the second bedroom.

There is obvious potential for extension over the current side-return, should you fancy a project once-in.

Munday's Estate Agents Ltd.
2 Mary Boast Walk
London SE5 8SP
020 3318 8900

www.mundays.com

MUNDAY'S

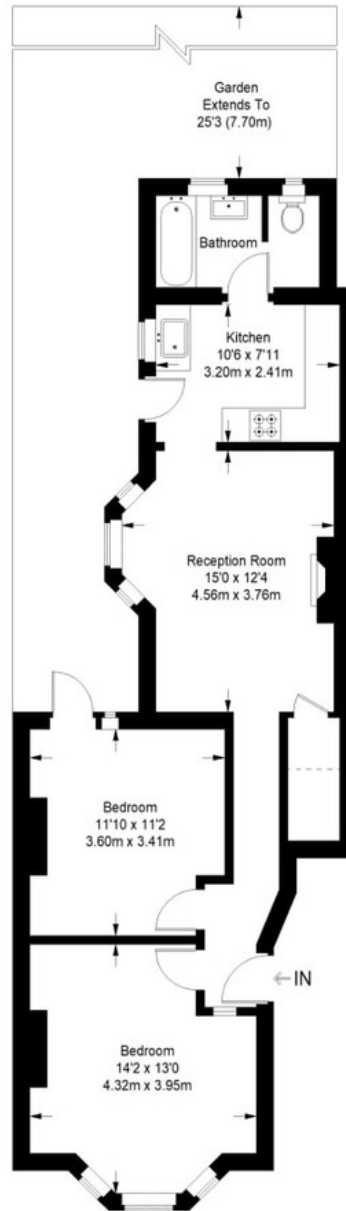


Munday's Estate Agents Ltd.
2 Mary Boast Walk
London SE5 8SP
020 3318 8900

www.mundays.com

MUNDAY'S

Ivydale Road



Ground Floor = 694 sq ft

Approximate Gross Internal Area
GROUND FLOOR = 694 sq ft / 64.47 sq m
Total = 694 sq ft / 64.47 sq m



This plan is for layout guidance only. Not drawn to scale unless stated. Windows and door openings are approximate. Whilst every care is taken in the preparation of this plan, please check all dimensions, shapes and compass bearings before making any decisions reliant upon them. (ID357409)

Munday's Estate Agents Ltd.
2 Mary Boast Walk
London SE5 8SP
020 3318 8900

www.mundays.com