

MUNDAY'S

Hunsdon Road, New Cross

£430,000



Chain free one bedroom ground floor Victorian conversion garden flat of 541 square feet, with obvious potential (subject to PP) to extend and convert to a two bedroom home; should want and budget allow.

A sizeable storage basement (of 343 square feet!) completes the offering. You could also/instead convert this to extra living/bedroom space, as others in the local area have done.

The location is a quiet residential street close to New Cross Gate and Queens Road Peckham stations - walk 12 and 15 minutes. Parking is unrestricted, on-street.

Munday's Estate Agents Ltd.
2 Mary Boast Walk
London SE5 8SP
020 3318 8900

www.mundays.com

MUNDAY'S

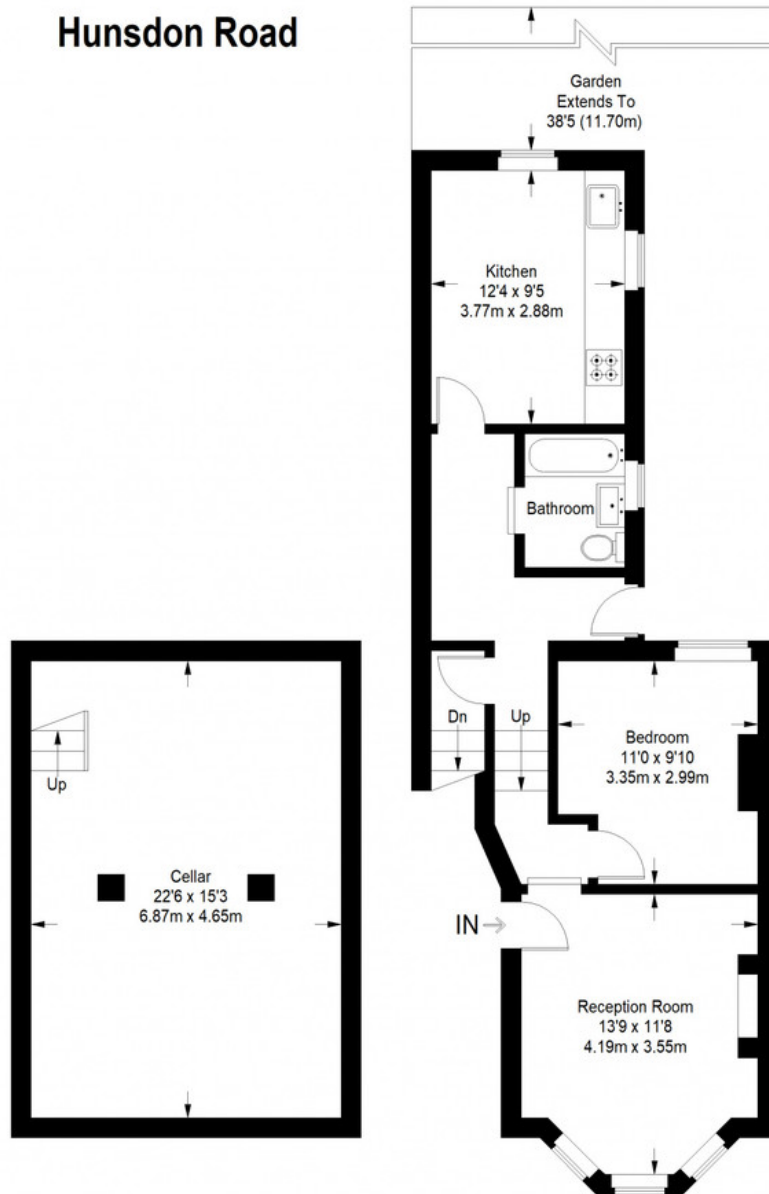


Munday's Estate Agents Ltd.
2 Mary Boast Walk
London SE5 8SP
020 3318 8900

www.mundays.com

MUNDAY'S

Hunsdon Road



Lower Ground Floor = 343 sq ft

Ground Floor = 541 sq ft

Approximate Gross Internal Area
GROUND FLOOR = 541 sq ft / 50.26 sq m
Total = 541 sq ft / 50.26 sq m



This plan is for layout guidance only. Not drawn to scale unless stated. Windows and door openings are approximate. Whilst every care is taken in the preparation of this plan, please check all dimensions, shapes and compass bearings before making any decisions reliant upon them. (ID357409)

Munday's Estate Agents Ltd.
2 Mary Boast Walk
London SE5 8SP
020 3318 8900

www.mundays.com