

## Horsnell Close, Camberwell

£525,000



Dashing two double bedroom second floor modern-build apartment of 732 square feet, and with a south-west facing balcony and double-glazing, close to Brunswick Park (walk two minutes) and central Camberwell (five minutes).

Your closest station is Denmark Hill - walk here in 15 minutes. From Camberwell Church Street you have loads of great bus routes. To pick up the tube, it is a short bus journey to Oval/Elephant.

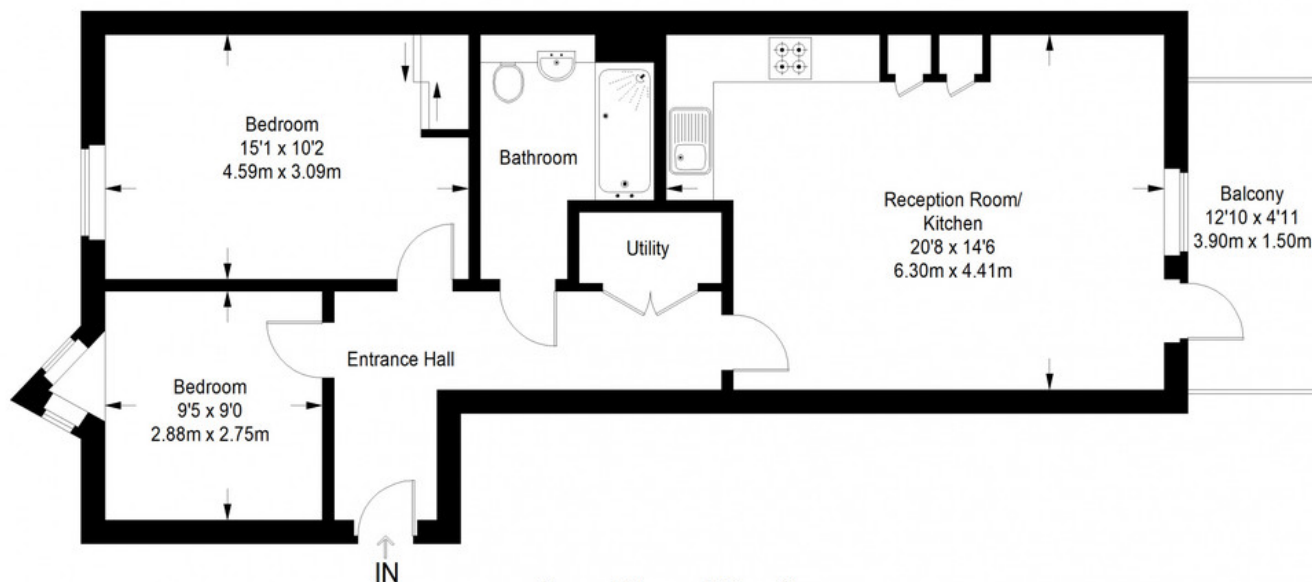
MUNDAY'S



*Munday's Estate Agents Ltd.*  
2 Mary Boast Walk  
London SE5 8SP  
020 3318 8900

[www.mundays.com](http://www.mundays.com)

## Fitton Court



**Second Floor = 732 sq ft**

Approximate Gross Internal Area  
SECOND FLOOR = 732 sq ft / 68.00 sq m  
Total = 732 sq ft / 68.00 sq m



This plan is for layout guidance only. Not drawn to scale unless stated. Windows and door openings are approximate. Whilst every care is taken in the preparation of this plan, please check all dimensions, shapes and compass bearings before making any decisions reliant upon them. (ID357409)