

MUNDAY'S

Hollydale Road, Peckham

£885,000



Delightful three bedroom Victorian mid-terrace bay-fronted house of circa 1005 square feet, with a sunny west-facing garden of over 40 feet. The house is in brilliant decorative order and is double-glazed throughout.

It's a great location as well. You are just an eight minute walk from both Queens Road and Nunhead Stations (both Fare Zone 2).

Munday's Estate Agents Ltd.
2 Mary Boast Walk
London SE5 8SP
020 3318 8900

www.mundays.com

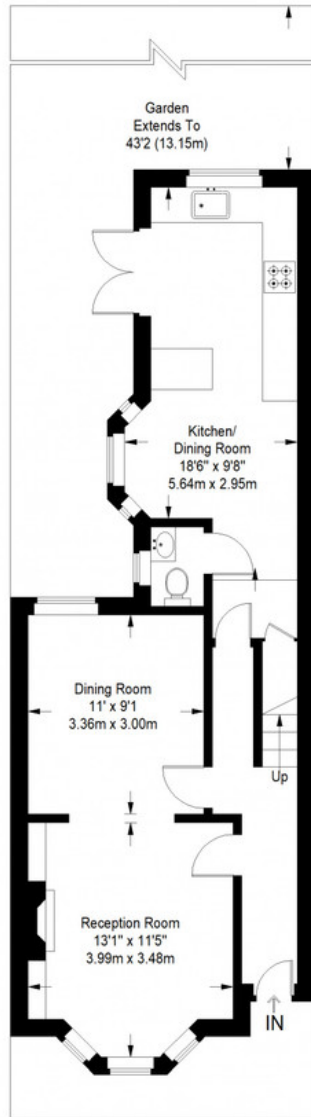
MUNDAY'S



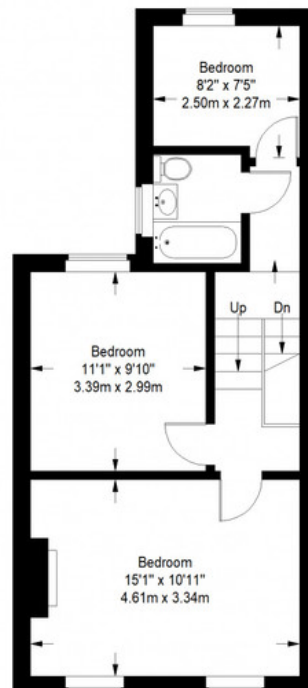
Munday's Estate Agents Ltd.
2 Mary Boast Walk
London SE5 8SP
020 3318 8900

www.mundays.com

Hollydale Road



Ground Floor = 550 sq ft



First Floor = 455 sq ft

Approximate Gross Internal Area
 GROUND FLOOR = 550 sq ft / 51.19 sq m
 FIRST FLOOR = 455 sq ft / 42.27 sq m
 Total = 1005 sq ft / 93.46 sq m



This plan is for layout guidance only. Not drawn to scale unless stated. Windows and door openings are approximate. Whilst every care is taken in the preparation of this plan, please check all dimensions, shapes and compass bearings before making any decisions reliant upon them. (ID357409)