

Hichisson Road, Nunhead

£425,000



Spacious and bright one bed apartment - with a Freehold-share and a sunny balcony to fab verdant views - on the second floor of a small modern end of terrace development. Chain free.

Find your new home just off the top corner of Peckham Rye Park and Common's 113 acres, super close to Aquarius (volunteer-run, 9-hole) Golf Course. The beautiful nature reserve of Nunhead Cemetery is just a short walk, too.

Parking is unrestricted on this and the surrounding streets. Local stations (each circa a mile) are Nunhead, Brockley and Peckham Rye. Bus routes from the local stop on Cheltenham Road can express your journey to each.

MUNDAY'S

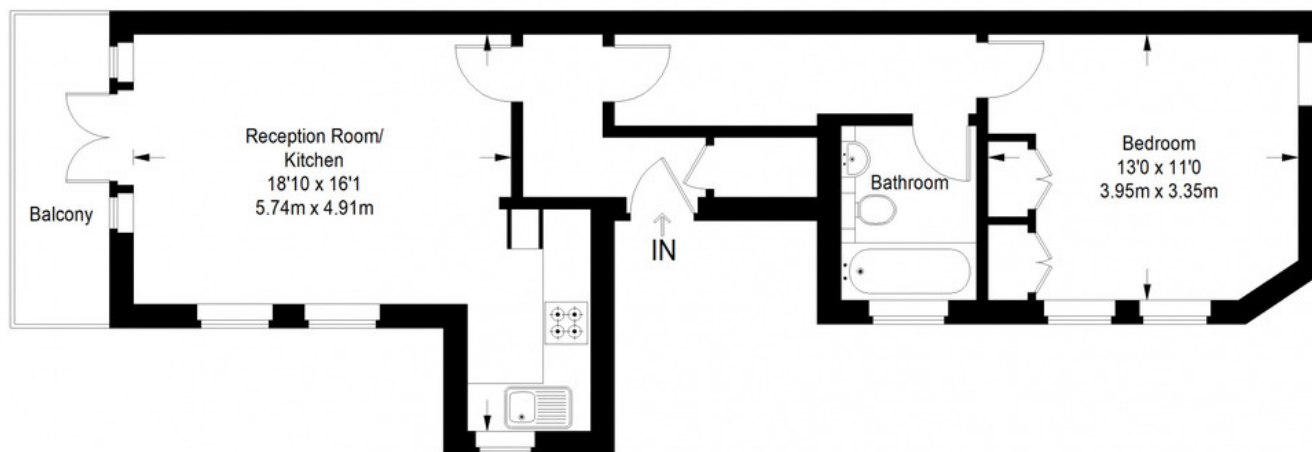


*Munday's Estate Agents Ltd.*  
2 Mary Boast Walk  
London SE5 8SP  
020 3318 8900

[www.mundays.com](http://www.mundays.com)

**MUNDAY'S**

## Hichisson Road



**Second Floor = 516 sq ft**

Approximate Gross Internal Area  
SECOND FLOOR = 516 sq ft / 47.94 sq m  
Total = 516 sq ft / 47.94 sq m



This plan is for layout guidance only. Not drawn to scale unless stated. Windows and door openings are approximate. Whilst every care is taken in the preparation of this plan, please check all dimensions, shapes and compass bearings before making any decisions reliant upon them. (ID357409)

*Munday's Estate Agents Ltd.*  
2 Mary Boast Walk  
London SE5 8SP  
020 3318 8900

[www.mundays.com](http://www.mundays.com)