

MUNDAY'S

Hensford Gardens, Upper Sydenham

£299,950



A cracking one bed first pad or downsize. With fetching and far-reaching views, it sits on the third (top) floor of a low-rise, purpose-built block that's close to both Sydenham and Forest Hill stations (walk 10 and 15 minutes respectively), for Windrush and regular rail services.

You will enjoy a walled communal vegetable garden, active residents association and resident caretaker. Sydenham Wells Park is also local, as are the fast-gentrifying high street areas on both Kirkdale and Sydenham Road. You're also close to leafy Forest Hill and Dulwich. Leasehold.

Munday's Estate Agents Ltd.
2 Mary Boast Walk
London SE5 8SP
020 3318 8900

www.mundays.com

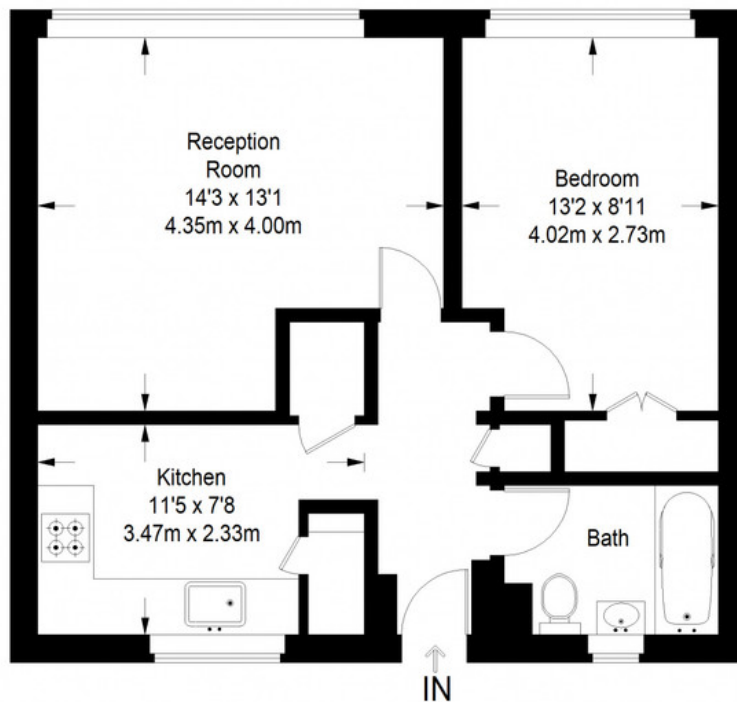
MUNDAY'S



Munday's Estate Agents Ltd.
2 Mary Boast Walk
London SE5 8SP
020 3318 8900

www.mundays.com

Hensford Gardens



Third Floor = 503 sq ft



Approximate Gross Internal Area
THIRD FLOOR = 503 sq ft / 46.73 sq m
Total = 503 sq ft / 46.73 sq m

This plan is for layout guidance only. Not drawn to scale unless stated. Windows and door openings are approximate. Whilst every care is taken in the preparation of this plan, please check all dimensions, shapes and compass bearings before making any decisions reliant upon them. (ID357409)