

MUNDAY'S

Hatcham Park Road, New Cross

£375,000



Neat one bedroom flat of 449 square feet within a pretty flat-fronted terrace (Victorian in shape and style matching its neighbours, but actually a clever modern reproduction rebuilt in the late eighties/early nineties - with completely new foundations and drainage), with its own front door and its own lawned garden of over 60 feet. Chain free.

Find your new pad on a tree-lined residential street within Hatcham Conservation Area, just a six minute walk from New Cross Gate Station.

Munday's Estate Agents Ltd.
2 Mary Boast Walk
London SE5 8SP
020 3318 8900

www.mundays.com

MUNDAY'S

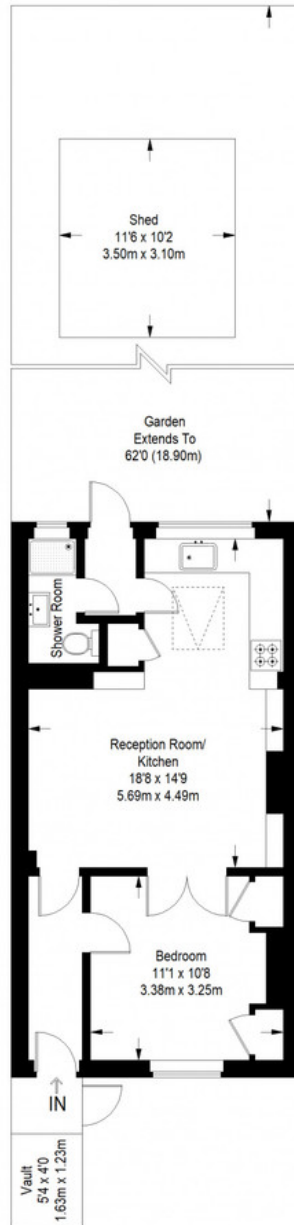


Munday's Estate Agents Ltd.
2 Mary Boast Walk
London SE5 8SP
020 3318 8900

www.mundays.com

MUNDAY'S

Hatcham Park Road



Lower Ground Floor = 449 sq ft

Approximate Gross Internal Area
LOWER GROUND FLOOR = 449 sq ft / 41.71 sq m
Total = 449 sq ft / 41.71 sq m



This plan is for layout guidance only. Not drawn to scale unless stated. Windows and door openings are approximate. Whilst every care is taken in the preparation of this plan, please check all dimensions, shapes and compass bearings before making any decisions reliant upon them. (ID357409)

Munday's Estate Agents Ltd.
2 Mary Boast Walk
London SE5 8SP
020 3318 8900

www.mundays.com