

MUNDAY'S

Hatcham Park Road, New Cross

£399,950



Sleek second (top) floor one bedroom pad - of 537 square feet - with a sunny south-facing balcony, within a boutique development of just eight contemporary apartments. Chain free.

You are located within popular Hatcham Conservation Area, really close to New Cross Gate Station (Zone 2 and on the Overground). Walk here down one road, in just seven minutes.

*Munday's Estate Agents Ltd.*  
2 Mary Boast Walk  
London SE5 8SP  
020 3318 8900

[www.mundays.com](http://www.mundays.com)

MUNDAY'S



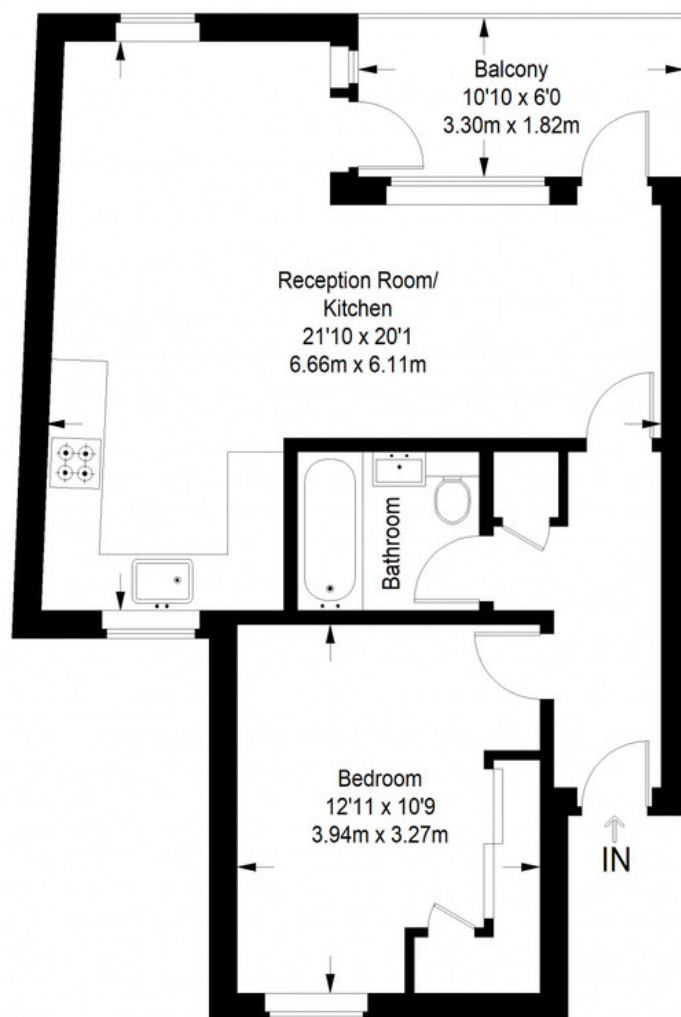
*Munday's Estate Agents Ltd.*  
2 Mary Boast Walk  
London SE5 8SP  
020 3318 8900

[www.mundays.com](http://www.mundays.com)



**MUNDAY'S**

## Hatcham Park Road



**Second Floor = 537 sq ft**

Approximate Gross Internal Area  
SECOND FLOOR = 537 sq ft / 50 sq m  
Total = 537 sq ft / 50 sq m



This plan is for layout guidance only. Not drawn to scale unless stated. Windows and door openings are approximate. Whilst every care is taken in the preparation of this plan, please check all dimensions, shapes and compass bearings before making any decisions reliant upon them. (ID357409)

*Munday's Estate Agents Ltd.*  
2 Mary Boast Walk  
London SE5 8SP  
020 3318 8900

[www.mundays.com](http://www.mundays.com)