

MUNDAY'S

Harfield Gardens, Grove Lane,
Camberwell

£399,950



Big and bright one bedroom ex-LA ground floor apartment within a low-rise brick-built block on gorgeous Grove Lane, within leafy Camberwell Grove Conservation Area. A cute patio (with direct access from the reception) with a sunny southwesterly orientation seals the deal.

Walk just six minutes to Denmark Hill Station, or 10 to East Dulwich Station. The town centres of East Dulwich, Camberwell and Peckham are all within an easy walking distance.

Munday's Estate Agents Ltd.
2 Mary Boast Walk
London SE5 8SP
020 3318 8900

www.mundays.com

MUNDAY'S

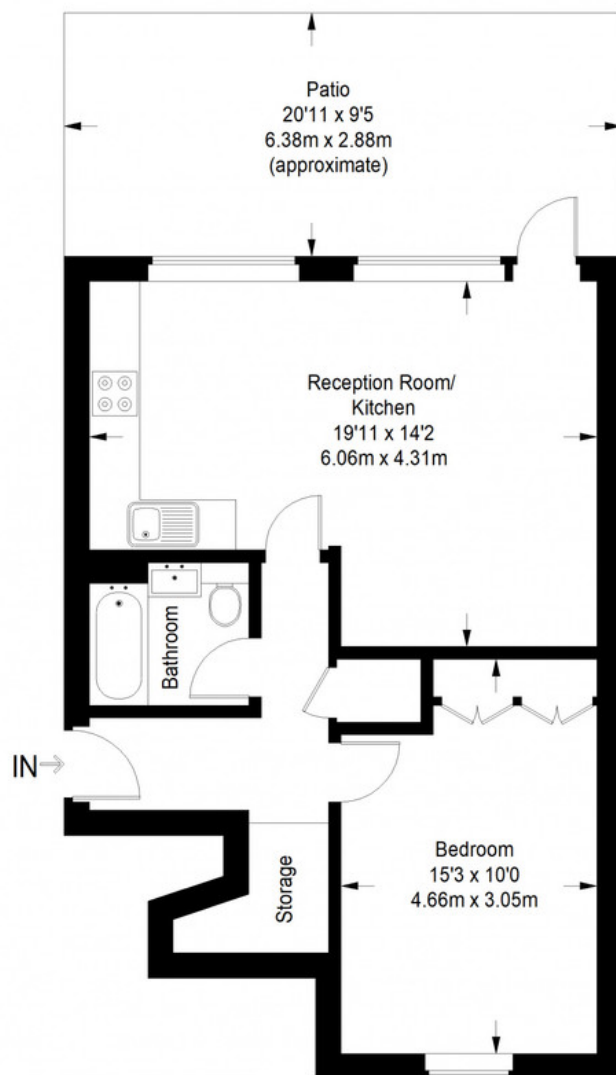


Munday's Estate Agents Ltd.
2 Mary Boast Walk
London SE5 8SP
020 3318 8900

www.mundays.com

MUNDAY'S

Harfield Gardens



Ground Floor = 535 sq ft

Approximate Gross Internal Area
GROUND FLOOR = 535 sq ft / 49.70 sq m
Total = 535 sq ft / 49.70 sq m



This plan is for layout guidance only. Not drawn to scale unless stated. Windows and door openings are approximate. Whilst every care is taken in the preparation of this plan, please check all dimensions, shapes and compass bearings before making any decisions reliant upon them. (ID357409)

Munday's Estate Agents Ltd.
2 Mary Boast Walk
London SE5 8SP
020 3318 8900

www.mundays.com