

MUNDAY'S

Hanover Park, Peckham

£695,000



Smart two double bedroom ground floor conversion flat with direct access to a private south-facing garden (from the reception room), plus courtyard (from the second bedroom). Find it just a five minute walk from Peckham Rye Station.

The attractive apartment has been deftly extended from its original footprint, and measures in at 785 square feet. It further benefits from a share of the building's Freehold.

Munday's Estate Agents Ltd.
2 Mary Boast Walk
London SE5 8SP
020 3318 8900

www.mundays.com

MUNDAY'S

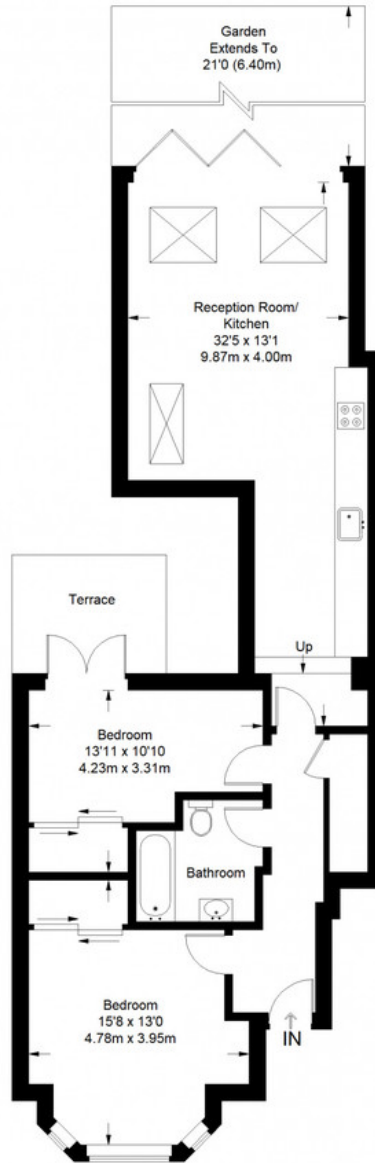


Munday's Estate Agents Ltd.
2 Mary Boast Walk
London SE5 8SP
020 3318 8900

www.mundays.com

MUNDAY'S

Hanover Park



Ground Floor = 785 sq ft

Approximate Gross Internal Area
GROUND FLOOR = 785 sq ft / 72.93 sq m
Total = 785 sq ft / 72.93 sq m



This plan is for layout guidance only. Not drawn to scale unless stated. Windows and door openings are approximate. Whilst every care is taken in the preparation of this plan, please check all dimensions, shapes and compass bearings before making any decisions reliant upon them. (ID357409)

Munday's Estate Agents Ltd.
2 Mary Boast Walk
London SE5 8SP
020 3318 8900

www.mundays.com