

Grovelands Close, Camberwell

£465,000



Lovely one double bedroom semi-detached modern-build Freehold house of 466 square feet, in a leafy residential setting on Grovelands Close – a most pleasing offshoot of grand Camberwell Grove, with thoughtful landscaping ensuring outlooks are notably green.

The tucked-away property is double-glazed throughout and has an attractive and neutral decorative scheme. A pretty west-facing picket-fenced garden (to the front) plus a dedicated parking space complete the package.

What a spot! Denmark Hill Station is all of a five minute walk. East Dulwich Station is yours in 15 and Peckham Rye Station, 16. All are Fare Zone 2. You are close to good bus routes, too. Central Camberwell is landed upon in under 10 minutes (Peckham's Bellenden Road = 15 and Rye Lane = 17).

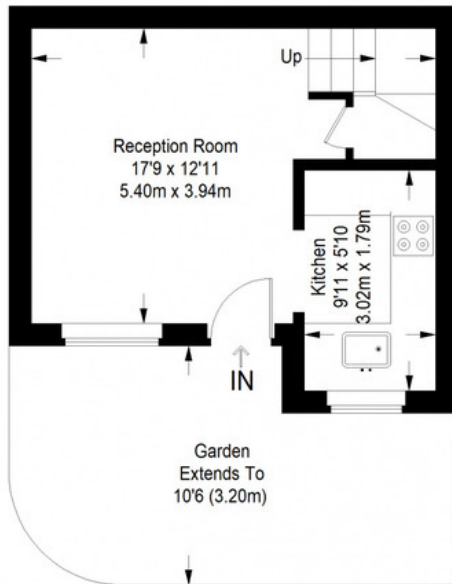
MUNDAY'S



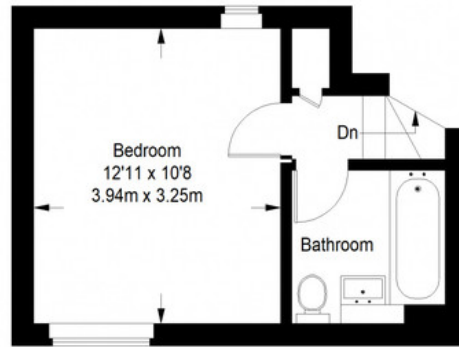
Munday's Estate Agents Ltd.
2 Mary Boast Walk
London SE5 8SP
020 3318 8900

www.mundays.com

Grovelands Close



Ground Floor = 249 sq ft



First Floor = 217 sq ft

Approximate Gross Internal Area
GROUND FLOOR = 249 sq ft / 23.13 sq m
FIRST FLOOR = 217 sq ft / 20.16 sq m
Total = 466 sq ft / 43.29 sq m



This plan is for layout guidance only. Not drawn to scale unless stated. Windows and door openings are approximate. Whilst every care is taken in the preparation of this plan, please check all dimensions, shapes and compass bearings before making any decisions reliant upon them. (ID357409)