

MUNDAY'S

Grove Park, Camberwell

£1,150,000



Architect-designed and chain free two bedroom apartment with a Freehold-share. Find it within the (heavenly!) leafy Camberwell Grove Conservation Area. Denmark Hill and Peckham Rye stations are reached by foot in 10 and 12 minutes respectively.

Your new classy and immaculate home is delivered over two upper floors, with a generous and sunny south-facing roof terrace which is blessed with open verdant views. Swoon!

Munday's Estate Agents Ltd.
2 Mary Boast Walk
London SE5 8SP
020 3318 8900

www.mundays.com

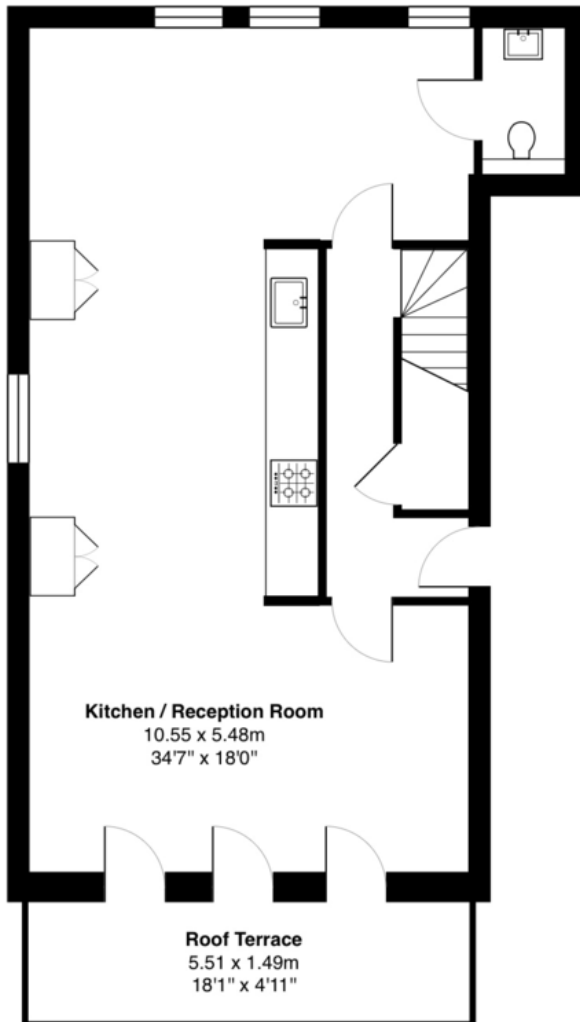
MUNDAY'S



Munday's Estate Agents Ltd.
2 Mary Boast Walk
London SE5 8SP
020 3318 8900

www.mundays.com

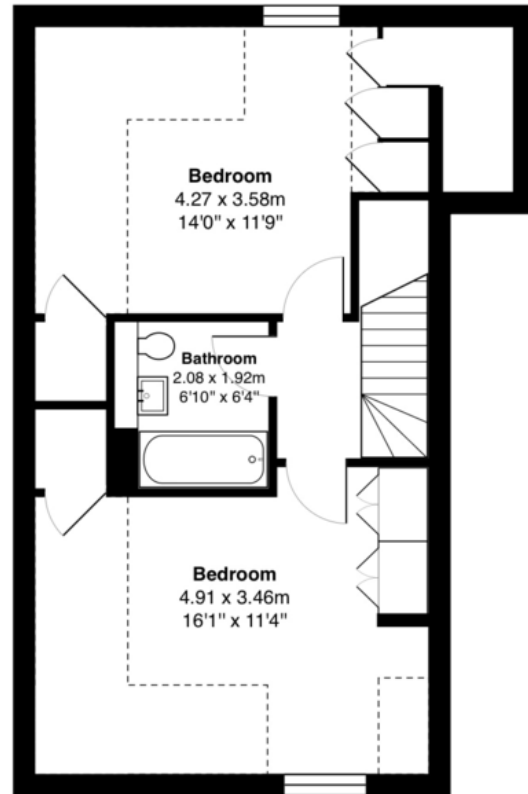
MUNDAY'S



Kitchen / Reception Room
10.55 x 5.48m
34'7" x 18'0"

Roof Terrace
5.51 x 1.49m
18'1" x 4'11"

First Floor



Bedroom
4.27 x 3.58m
14'0" x 11'9"

Bathroom
2.08 x 1.92m
6'10" x 6'4"

Bedroom
4.91 x 3.46m
16'1" x 11'4"

Second Floor

Total Area: 107.8 m² ... 1160 ft² (excluding roof terrace)

All measurements are approximate and for display purposes only

Munday's Estate Agents Ltd.
2 Mary Boast Walk
London SE5 8SP
020 3318 8900

www.mundays.com