

Grove Park, Camberwell

£950,000



Big, beautiful, recently renovated conversion flat within a supersized semi, with two bedrooms and two bathrooms, and a large garden which has side access and direct access from the second bedroom and the kitchen/reception room. Chain free.

The location is leafy Camberwell Grove Conservation Area. Denmark Hill and Peckham Rye stations are reached by foot in 10 and 12 minutes respectively. Permit-parking is available on the street.

Throughout the property, you have notably high ceilings, high-end fixtures and fittings, and a neutral decorative scheme.

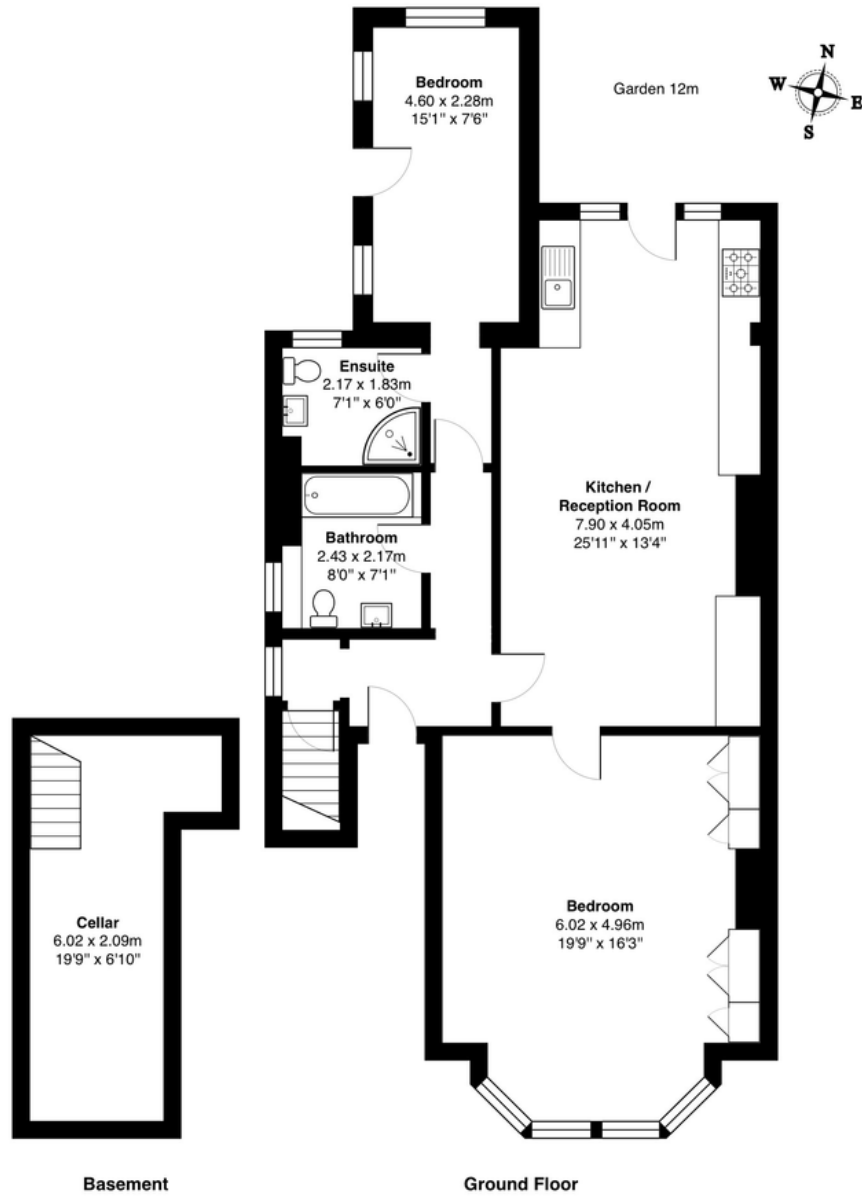
MUNDAY'S



Munday's Estate Agents Ltd.
2 Mary Boast Walk
London SE5 8SP
020 3318 8900

www.mundays.com

MUNDAY'S



Total Area: 106.4 m² ... 1145 ft²

All measurements are approximate and for display purposes only

Munday's Estate Agents Ltd.
2 Mary Boast Walk
London SE5 8SP
020 3318 8900

www.mundays.com