

Grove Lane, Camberwell

£875,000



Beautiful three bedroom second floor apartment of circa 900 square feet, with underfloor heating, two bathrooms (one is en suite to the master), a Freehold-share, and a generous private terrace. And your luck is very much in, as the property is being sold without a chain

You will find your new handsome home (Georgian in design and aesthetic, though actually a seriously classy modern build - 2015) on prestigious Grove Lane, in the heart of leafy Camberwell Grove Conservation Area.

You are just a four minute walk from Denmark Hill Station (Zone 2, and on the Overground network), and but a few minutes from central Camberwell and Camberwell Green.

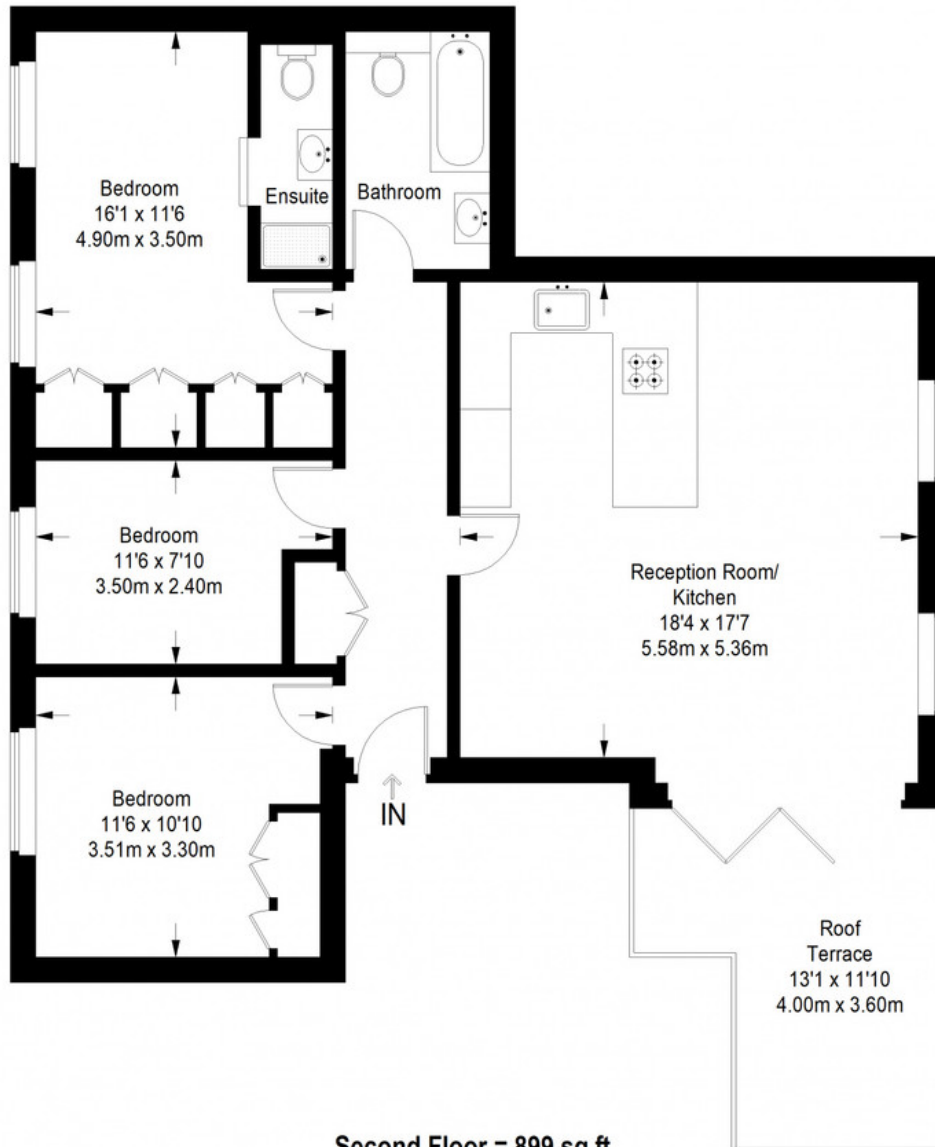
MUNDAY'S



Munday's Estate Agents Ltd.
2 Mary Boast Walk
London SE5 8SP
020 3318 8900

www.mundays.com

Grove Lane



Second Floor = 899 sq ft

Approximate Gross Internal Area
 SECOND FLOOR = 899 sq ft / 83.52 sq m
 Total = 899 sq ft / 83.52 sq m



This plan is for layout guidance only. Not drawn to scale unless stated. Windows and door openings are approximate. Whilst every care is taken in the preparation of this plan, please check all dimensions, shapes and compass bearings before making any decisions reliant upon them. (ID357409)