

MUNDAY'S

Grosvenor Park, Camberwell

£775,000



Cool end of terrace mews house – once a Victorian coach house/stables with hayloft and servant quarters – over three floors, with two bedrooms and two bathrooms, private off-street parking, and a large and lovely communal garden (this is shared with three neighbouring properties = excellent for summer socials!).

Find your new pleasingly-characterful home in a connected yet tucked-away peaceful position on the headline act of Southwark's Grosvenor Park Conservation Area, close to Burgess Park and Kennington Park, and to Kennington and Oval tube stations (walk under 15 minutes to either).

Munday's Estate Agents Ltd.
2 Mary Boast Walk
London SE5 8SP
020 3318 8900

www.mundays.com

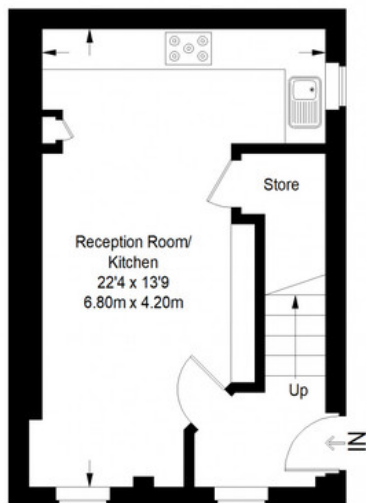
MUNDAY'S



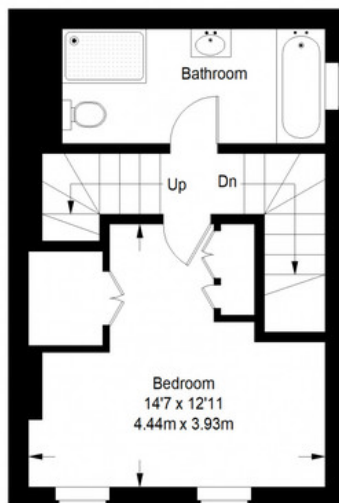
Munday's Estate Agents Ltd.
2 Mary Boast Walk
London SE5 8SP
020 3318 8900

www.mundays.com

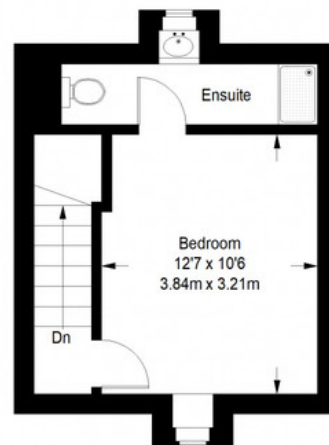
Grosvenor Park



Ground Floor = 311 sq ft



First Floor = 311 sq ft



Second Floor = 230 sq ft

Approximate Gross Internal Area
GROUND FLOOR = 311 sq ft / 28.89 sq m
FIRST FLOOR = 311 sq ft / 28.89 sq m
SECOND FLOOR = 230 sq ft / 21.37 sq m
Total = 852 sq ft / 79.15 sq m



This plan is for layout guidance only. Not drawn to scale unless stated. Windows and door openings are approximate. Whilst every care is taken in the preparation of this plan, please check all dimensions, shapes and compass bearings before making any decisions reliant upon them. (ID357409)