

## Green Dale Close, East Dulwich

£825,000



Best and final offers invited by 4pm, Friday 26th April.

Bright, beautiful and practical three bedroom mid-terrace house with both front and rear gardens and double-glazing, in a leafy, peaceful and tucked-away spot set close to JAGS independent school.

Your local stations are East Dulwich and North Dulwich (eight and 12 minutes by foot).

A great layout (no wasted space in the form of corridors here!) delivers its 979 square feet really pleasingly and efficiently. Your bedrooms are two good doubles and a large single, and you have plenty of built-in storage plus a downstairs w.c. The large reception room has wall-spanning folding doors to the south-east facing garden, which gets all-day sun. Lucky you!

The position is such a lovely one - set between East Dulwich's high street (Lordship Lane) and pretty Dulwich Village, and you're in catchment for the excellent local state schools in pretty Dulwich Village.



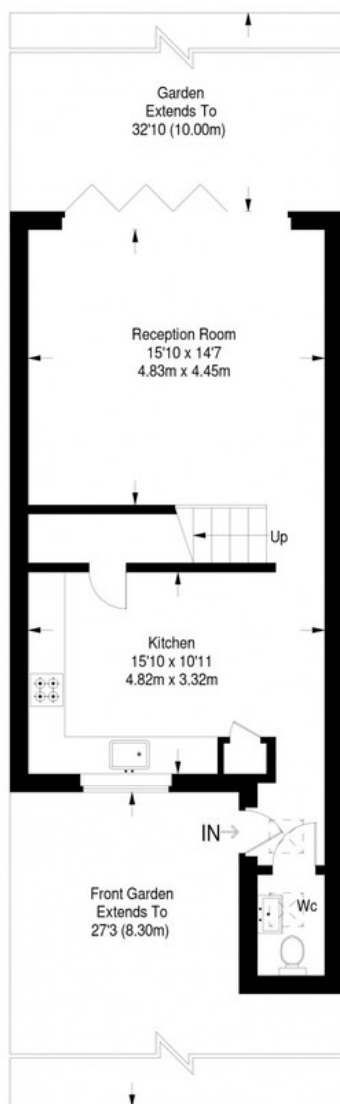
MUNDAY'S



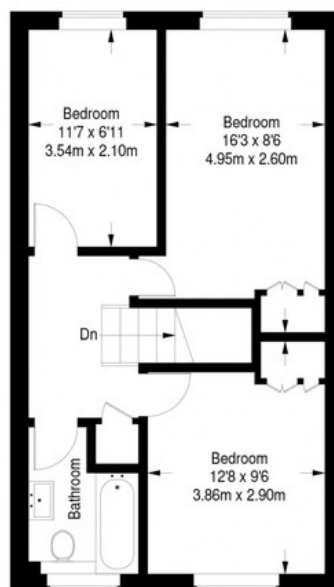
*Munday's Estate Agents Ltd.*  
2 Mary Boast Walk  
London SE5 8SP  
020 3318 8900

[www.mundays.com](http://www.mundays.com)

## Green Dale Close



Ground Floor = 514 sq ft



First Floor = 465 sq ft

Approximate Gross Internal Area  
GROUND FLOOR = 514 sq ft / 47.75 sq m  
FIRST FLOOR = 465 sq ft / 43.20 sq m  
Total = 979 sq ft / 90.95 sq m



This plan is for layout guidance only. Not drawn to scale unless stated. Windows and door openings are approximate. Whilst every care is taken in the preparation of this plan, please check all dimensions, shapes and compass bearings before making any decisions reliant upon them. (ID357409)