

Goodwood Road, New Cross

£450,000



Be just the second owner of this oversized one bedroom modern apartment (578 square feet), which is found on the fifth floor of an attractive development (delivered by hgp architects/Crest Nicholson, 2019). There are great London skyline views from your private balcony. Long leasehold.

Bond House (so called after the previous 1970's commercial building which stood here first) hosts 89 units in all. The development has a secure shared bike store, and a central communal lawned courtyard space at ground level.

Walk four minutes to New Cross Gate Station, or 10 to New Cross Station (both with regular and Windrush line services). Bus routes are great from the top of the street, too.

MUNDAY'S

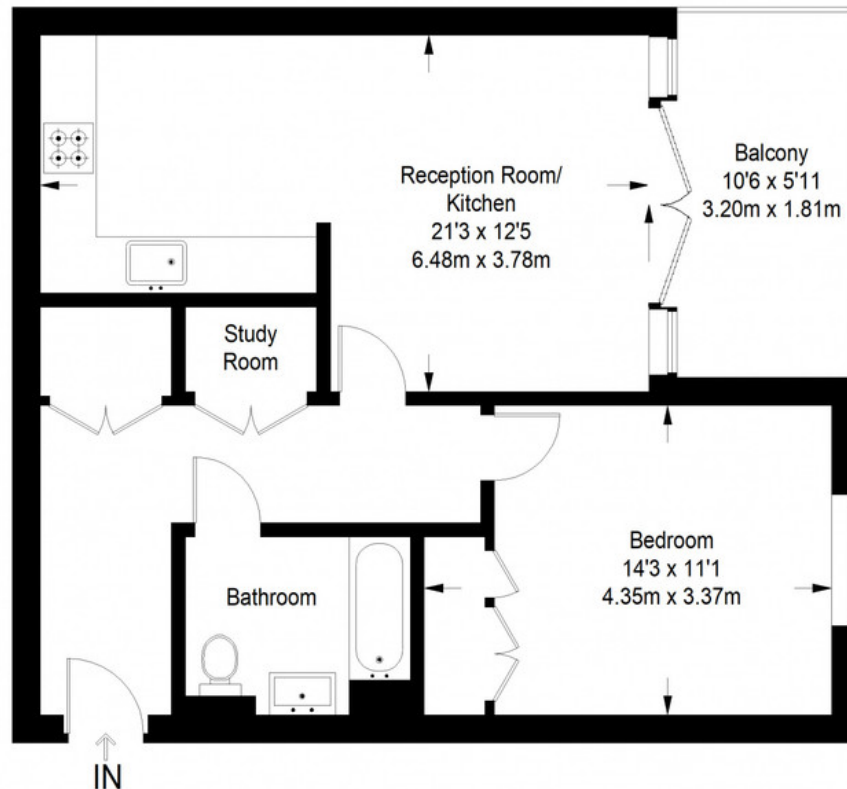


*Munday's Estate Agents Ltd.*  
2 Mary Boast Walk  
London SE5 8SP  
020 3318 8900

[www.mundays.com](http://www.mundays.com)

MUNDAY'S

## Bond House



**Fifth Floor = 578 sq ft**

Approximate Gross Internal Area  
FIFTH FLOOR = 578 sq ft / 53.70 sq m  
Total = 578 sq ft / 53.70 sq m



This plan is for layout guidance only. Not drawn to scale unless stated. Windows and door openings are approximate. Whilst every care is taken in the preparation of this plan, please check all dimensions, shapes and compass bearings before making any decisions reliant upon them. (ID357409)

*Munday's Estate Agents Ltd.*  
2 Mary Boast Walk  
London SE5 8SP  
020 3318 8900

[www.mundays.com](http://www.mundays.com)