

## Glenville Grove, Deptford

£495,000



Modern two double bedroom penthouse apartment of 713 square feet, with both bath and shower rooms, and a balcony to skyline views. Chain free.

The location of Regency Court is a well-connected yet quiet cul de sac. You are just five minutes from Deptford and New Cross stations and their centres. For Wharfers, Deptford DLR Station is yours in 10 minutes.

Resting on the Deptford/New Cross border, you are wonderfully-close to Goldsmiths University (we love the 'Scribble' atop the Arts complex) and Goldsmiths Centre for Contemporary Art, and Deptford High Street and Market Yard, Greenwich and Brockley too - all are an easy walk for pubs, markets and more.

MUNDAY'S

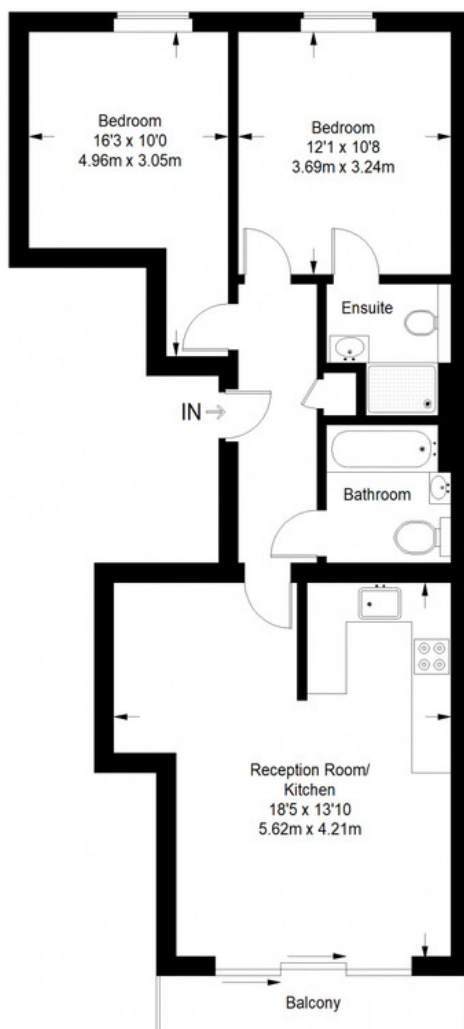


Munday's Estate Agents Ltd.  
2 Mary Boast Walk  
London SE5 8SP  
020 3318 8900

[www.mundays.com](http://www.mundays.com)

MUNDAY'S

## Regency Court



Third Floor = 713 sq ft

Approximate Gross Internal Area  
THIRD FLOOR = 713 sq ft / 66.24 sq m  
Total = 713 sq ft / 66.24 sq m



This plan is for layout guidance only. Not drawn to scale unless stated. Windows and door openings are approximate. Whilst every care is taken in the preparation of this plan, please check all dimensions, shapes and compass bearings before making any decisions reliant upon them. (ID357409)

Munday's Estate Agents Ltd.  
2 Mary Boast Walk  
London SE5 8SP  
020 3318 8900

[www.mundays.com](http://www.mundays.com)