

MUNDAY'S

Gibbon Road, Nunhead

£385,000



A bright, long-leased and neat purpose-built one bed maisonette, close to Nunhead Station and high street shops. Delivering over 620 square feet, the layout is well-balanced, and a long balcony (21ft: the width of the flat!) is the clincher.

It's an ace first or second home, London bolthole or buy to let property. Welcome features include double-glazed windows and doors, built-in storage cupboards, your own front door and neutral decor.

Munday's Estate Agents Ltd.
2 Mary Boast Walk
London SE5 8SP
020 3318 8900

www.mundays.com

MUNDAY'S

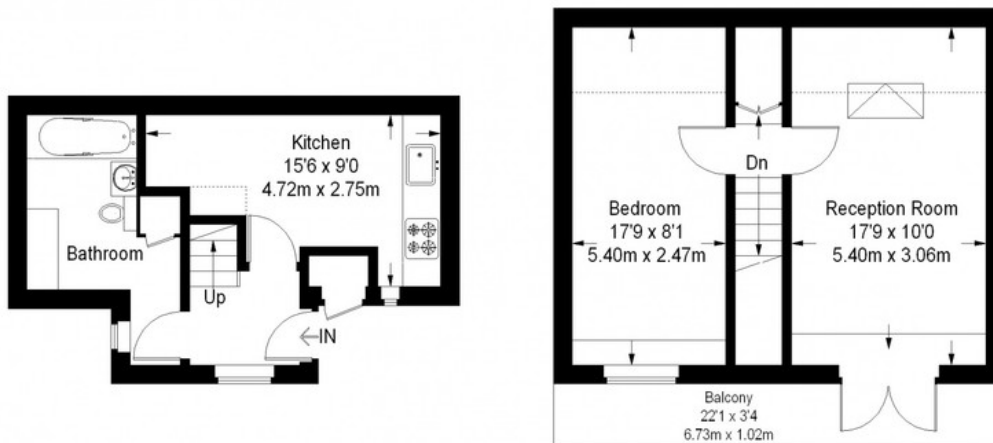


Munday's Estate Agents Ltd.
2 Mary Boast Walk
London SE5 8SP
020 3318 8900

www.mundays.com


MUNDAY'S

Gibbon Road



Ground Floor = 236 sq ft

First Floor = 388 sq ft

 = Reduced headroom below 1.5 m / 5'0

Approximate Gross Internal Area
 Ground Floor = 235 sq ft / 21.9 sq m
 First Floor = 388 sq ft / 36.0 sq m
 Total = 623 sq ft / 57.9 sq m



This plan is for layout guidance only. Not drawn to scale unless stated. Windows and door openings are approximate. Whilst every care is taken in the preparation of this plan, please check all dimensions, shapes and compass bearings before making any decisions reliant upon them. (ID293510)

Munday's Estate Agents Ltd.
 2 Mary Boast Walk
 London SE5 8SP
 020 3318 8900

www.mundays.com