

MUNDAY'S

Gautrey Road, Nunhead

£435,000



Bright and oversized one double bedroom raised ground floor flat (of 604 square feet) with noteworthy high ceilings.

The current owners have recently and beautifully renovated the apartment with excellent attention to detail. Lift not a finger here!

You are situated on a tree-lined residential street just eight minutes by foot from Nunhead and Queens Road Peckham stations. Nunhead's cute high street and Green/Conservation Area is a short stroll from your door, too.

*Munday's Estate Agents Ltd.*  
2 Mary Boast Walk  
London SE5 8SP  
020 3318 8900

[www.mundays.com](http://www.mundays.com)

MUNDAY'S

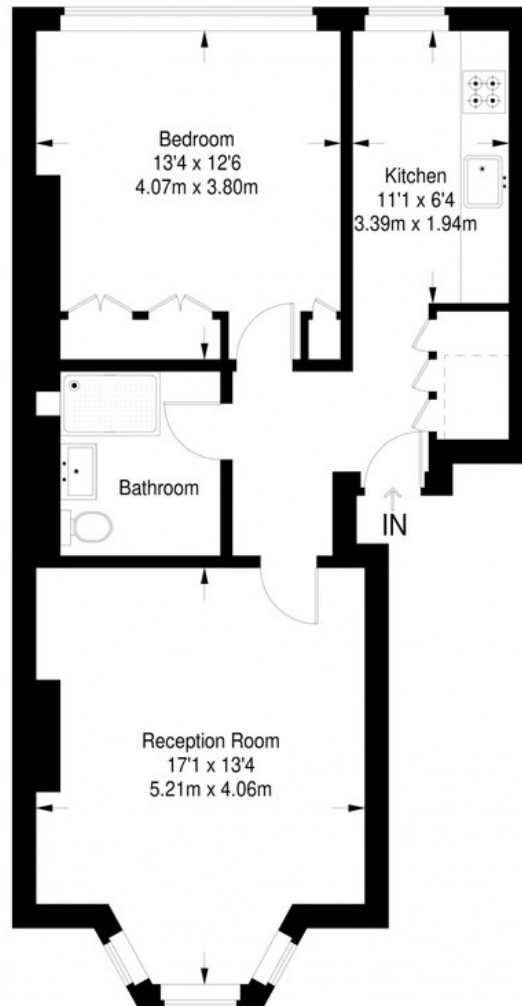


*Munday's Estate Agents Ltd.*  
2 Mary Boast Walk  
London SE5 8SP  
020 3318 8900

[www.mundays.com](http://www.mundays.com)

**MUNDAY'S**

## Gautrey Road



**Raised Ground Floor = 604 sq ft**

Approximate Gross Internal Area  
RAISED GROUND FLOOR = 604 sq ft / 56.11 sq m  
Total = 604 sq ft / 56.11 sq m



This plan is for layout guidance only. Not drawn to scale unless stated. Windows and door openings are approximate. Whilst every care is taken in the preparation of this plan, please check all dimensions, shapes and compass bearings before making any decisions reliant upon them. (ID357409)

*Munday's Estate Agents Ltd.*  
2 Mary Boast Walk  
London SE5 8SP  
020 3318 8900

[www.mundays.com](http://www.mundays.com)