

MUNDAY'S

Gairloch Road, Camberwell

£995,000



Beautiful bay-fronted Victorian end of terrace house of 1014 square feet, with three double bedrooms, on one of the lovely 'Lyndhurst toast-rack' quiet back streets, just a nine minute walk from Denmark Hill Station (/14 to Peckham Rye Station). A cute south-facing 'city' garden seals the deal.

Munday's Estate Agents Ltd.
2 Mary Boast Walk
London SE5 8SP
020 3318 8900

www.mundays.com

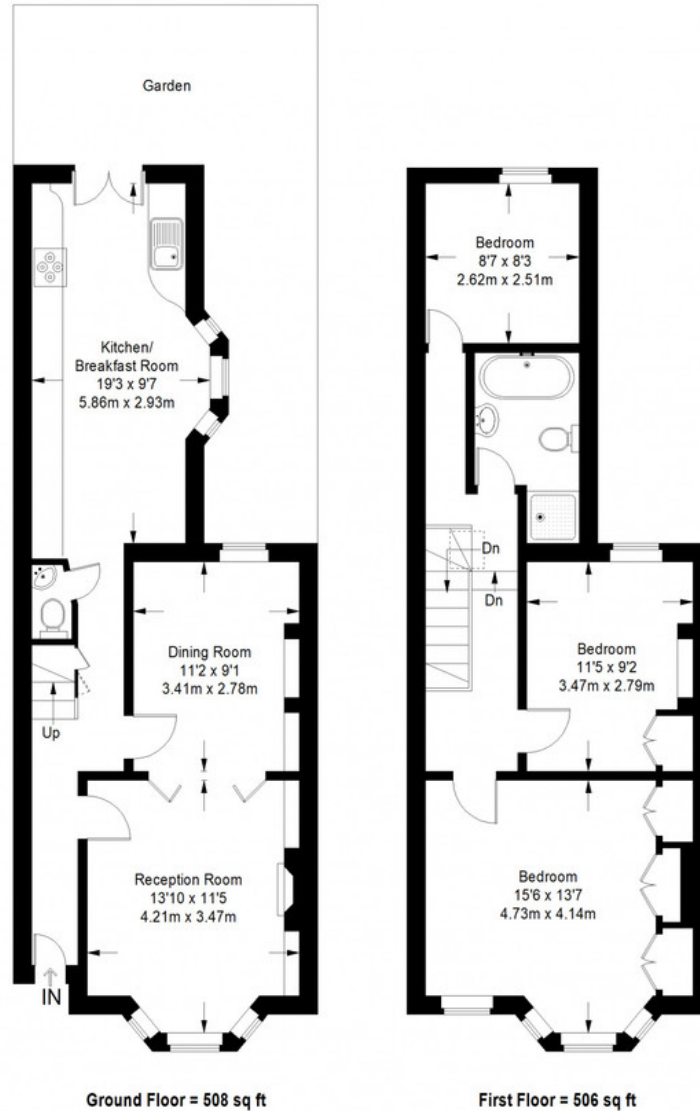
MUNDAY'S



Munday's Estate Agents Ltd.
2 Mary Boast Walk
London SE5 8SP
020 3318 8900

www.mundays.com

Gairloch Road



Approximate Gross Internal Area
 GROUND FLOOR = 508 sq ft / 47 sq m
 FIRST FLOOR = 506 sq ft / 47 sq m
 Total = 1014 sq ft / 94 sq m



This plan is for layout guidance only. Not drawn to scale unless stated. Windows and door openings are approximate. Whilst every care is taken in the preparation of this plan, please check all dimensions, shapes and compass bearings before making any decisions reliant upon them. (ID357409)