

Friern Road, East Dulwich

£600,000



Recently-refurbished and ready-to-go upper floor Victorian conversion apartment (of 890 square feet).

The attractive flat has two double bedrooms and a single bedroom/office. Chain free.

This is a delightful residential tree-lined street, and you are just a 10 minute walk from Peckham Rye Park and Common's 113 acres. Your most local stations are East Dulwich and Peckham Rye (walk 22 minutes for either, or jump on a bus from the end of the road for a faster journey/stay on for central London).

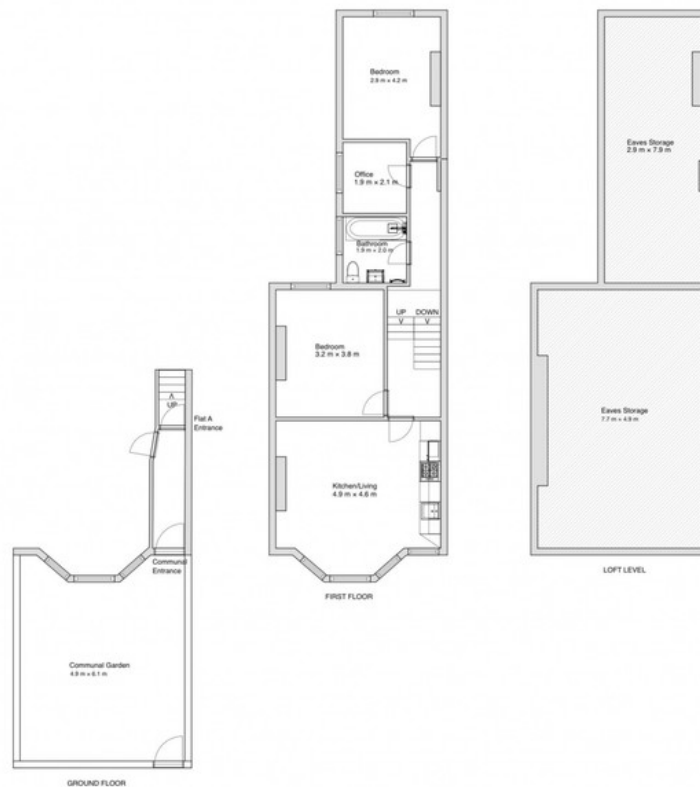
MUNDAY'S



Munday's Estate Agents Ltd.
2 Mary Boast Walk
London SE5 8SP
020 3318 8900

www.mundays.com

Friern Road, SE22 First Floor Split Level Apartment



Approximate Gross Internal Area

Ground Floor = 13 sqft / 1.28 sqm
 First Floor = 689 sqft / 64.00 sqm
 Eaves Storage = 630 sqft / 58.52 sqm

Total (exc. storage) = 702 sqft / 65.22 sqm
 Total (inc. storage) = 1332 sqft / 123.80 sqm

Whilst every care is taken in the preparation of these plans and images, please check all dimensions, shapes and compass bearings before making any decision reliant upon them.