

Eythorne Road, Oval

£599,950



Big and bright two double bedroom modern apartment of 781 square feet, with a private terrace area (accessed from both the reception and largest bedroom), in a smart low-rise private development in a quiet residential position in Camberwell/Oval borderland.

Local parks are Myatt's Fields and Eythorne Park. Oval tube station is a 15 minute walk and bus travel is easy in this locale. Secure bike storage is available to residents.

MUNDAY'S

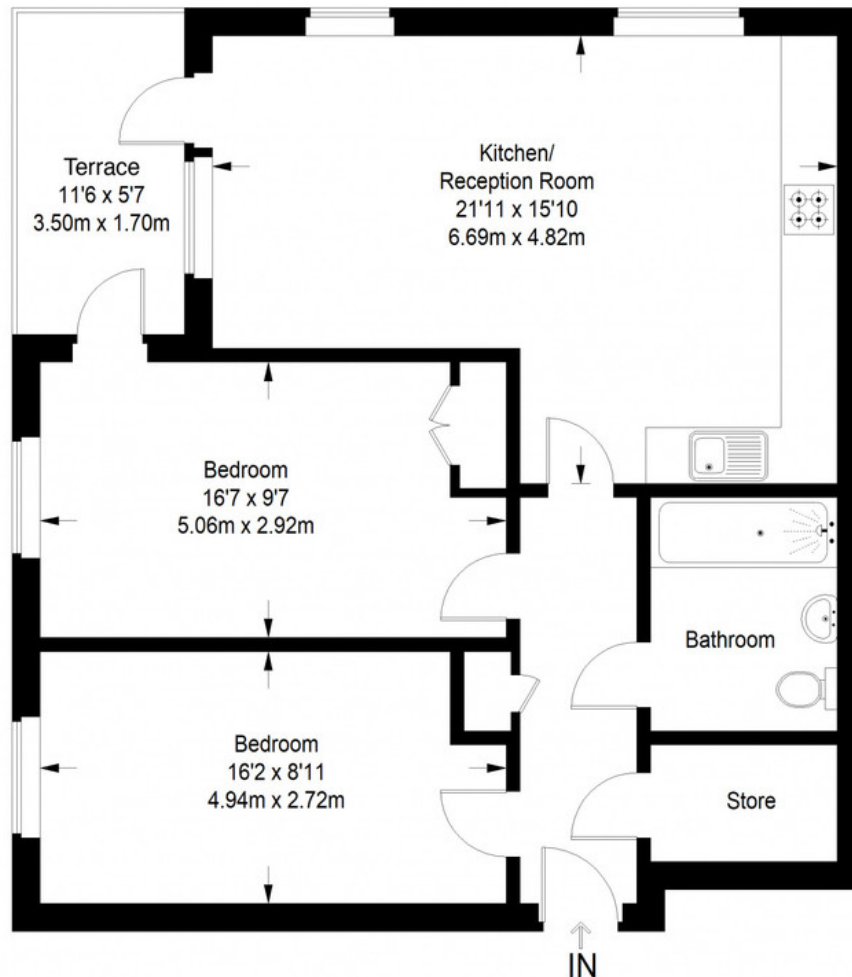


Munday's Estate Agents Ltd.
2 Mary Boast Walk
London SE5 8SP
020 3318 8900

www.mundays.com

MUNDAY'S

Eythorne Road



Ground Floor = 781 sq ft

Approximate Gross Internal Area
GROUND FLOOR = 781 sq ft / 72.55 sq m
Total = 781 sq ft / 72.55 sq m



This plan is for layout guidance only. Not drawn to scale unless stated. Windows and door openings are approximate. Whilst every care is taken in the preparation of this plan, please check all dimensions, shapes and compass bearings before making any decisions reliant upon them. (ID357409)

Munday's Estate Agents Ltd.
2 Mary Boast Walk
London SE5 8SP
020 3318 8900

www.mundays.com