

MUNDAY'S

Ethnard Road, Peckham

£950,000



Extended bay-fronted, halls-adjointing Victorian terrace of over 1619 square feet, delivering five bedrooms, three shower rooms, and one bathroom. Chain free.

The location is a residential Peckham street that is close to brilliant bus connections on Old Kent Road, and a 15 minute walk from Queen's Road Peckham Station (Zone 2 and on the London Overground network). There are also two Bakerloo line stops planned for OKR which will further improve the transport options, looking ahead.

Munday's Estate Agents Ltd.
2 Mary Boast Walk
London SE5 8SP
020 3318 8900

www.mundays.com

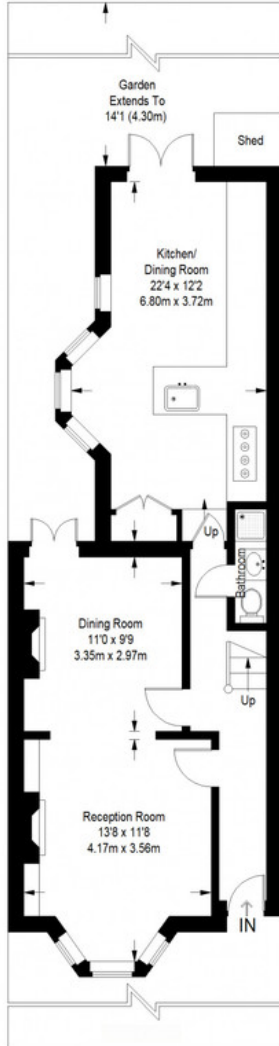
MUNDAY'S



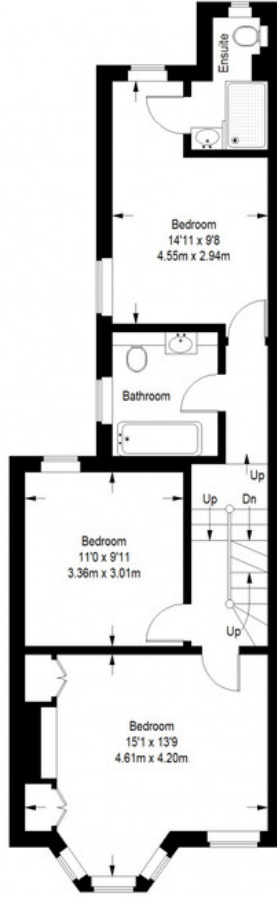
Munday's Estate Agents Ltd.
2 Mary Boast Walk
London SE5 8SP
020 3318 8900

www.mundays.com

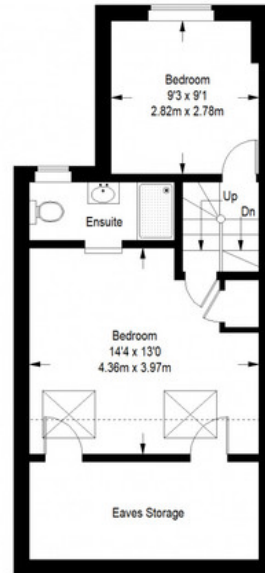
Ethnard Road



Ground Floor = 693 sq ft



First Floor = 599 sq ft



Second Floor = 427 sq ft

= Reduced headroom below 1.5 m / 5'0

Approximate Gross Internal Area
 GROUND FLOOR = 593 sq ft / 55.09 sq m
 FIRST FLOOR = 599 sq ft / 55.65 sq m
 SECOND FLOOR (Excluding Reduced Headroom) = 303 sq ft / 28.15 sq m
 (Reduced Headroom) = 124 sq ft / 11.52sq m
 Total = 1619 sq ft / 150.41 sq m



This plan is for layout guidance only. Not drawn to scale unless stated. Windows and door openings are approximate. Whilst every care is taken in the preparation of this plan, please check all dimensions, shapes and compass bearings before making any decisions reliant upon them. (ID357409)