

Elmworth Grove, West Dulwich

£499,950



Big and bright third (top) floor, three bedroom ex-LA apartment of almost 800 square feet. The property is move-in ready, having been very recently pro-decorated (fresh white walls are the pleasing order of the day). Chain free.

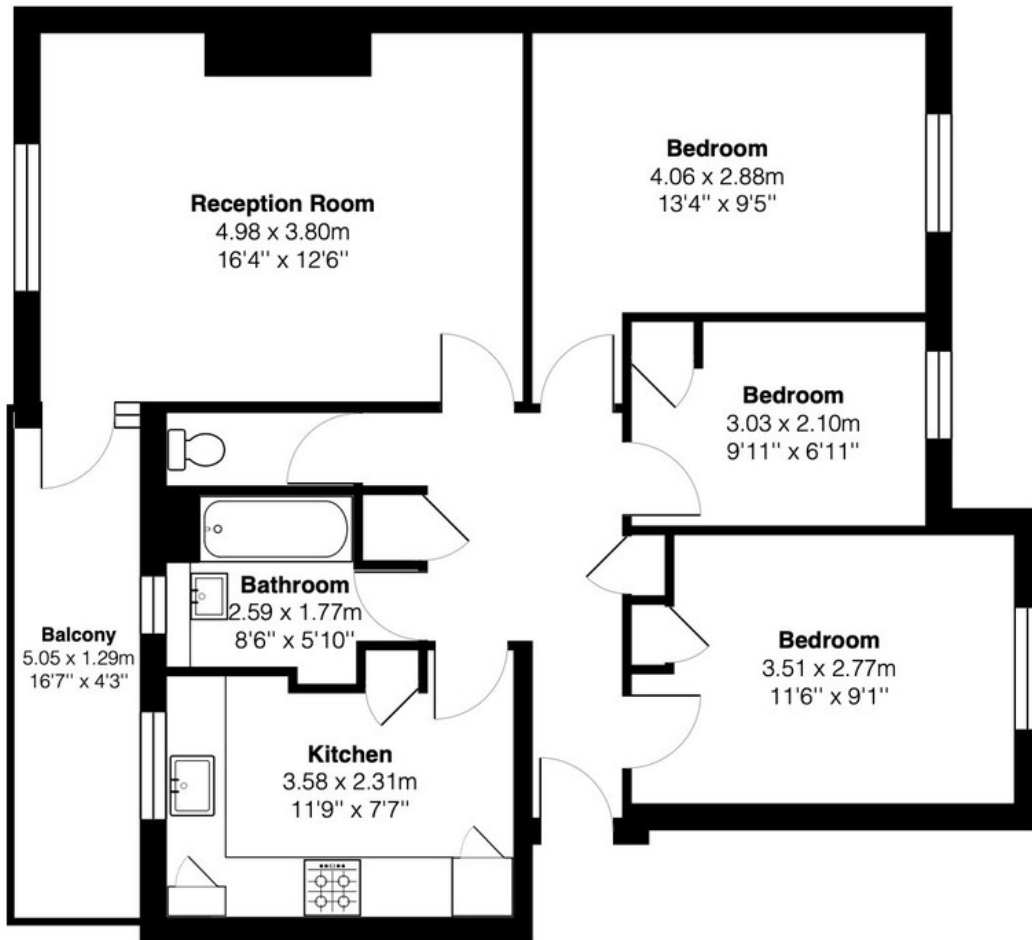
Your new flat has a brilliant east/west orientation (favoured by artists) and is fully double-glazed throughout. The attractive, brick-built, low-rise estate is set in well-maintained grounds with notably generous communal lawns and mature trees. This really is a delightful location to call home, set back from hustle and bustle yet near a fab parade of shops on Rosendale Road, and just a short walk from the centres of both West Norwood and Dulwich Village. Getting further afield is easy with West Dulwich Station just an eight minute walk away, or you can walk to West Norwood Station in 15.

MUNDAY'S



Munday's Estate Agents Ltd.
2 Mary Boast Walk
London SE5 8SP
020 3318 8900

www.mundays.com



Third Floor

Total Area: 74.2 m² ... 798 ft² (excluding balcony)

All measurements are approximate and for display purposes only