

## Elliott's Row, Elephant & Castle

£625,000



Architect-designed two bedroom modern yet characterful apartment within a smart Victorian building - of just three properties. A private south-facing terrace completes the brilliant offering. On-street permit parking is available for residents.

Zone 1 alert! The location is a tucked-away one on a quiet residential street, yet you are right in the heart of one of London's most vibrant and well-connected areas, very close to UAL and LSBU. Northern, Bakerloo and Jubilee lines are all close by, or jump on the Thameslink. Multiple bus routes are all yours and there are dedicated cycle paths just a couple of minutes from your door.

However you get there, Central London is just moments away.

The handsome turnkey home - designed by SE London architect Red Brick Architects - makes excellent use of space and light and boasts good storage as well. You are in for a treat!



MUNDAY'S

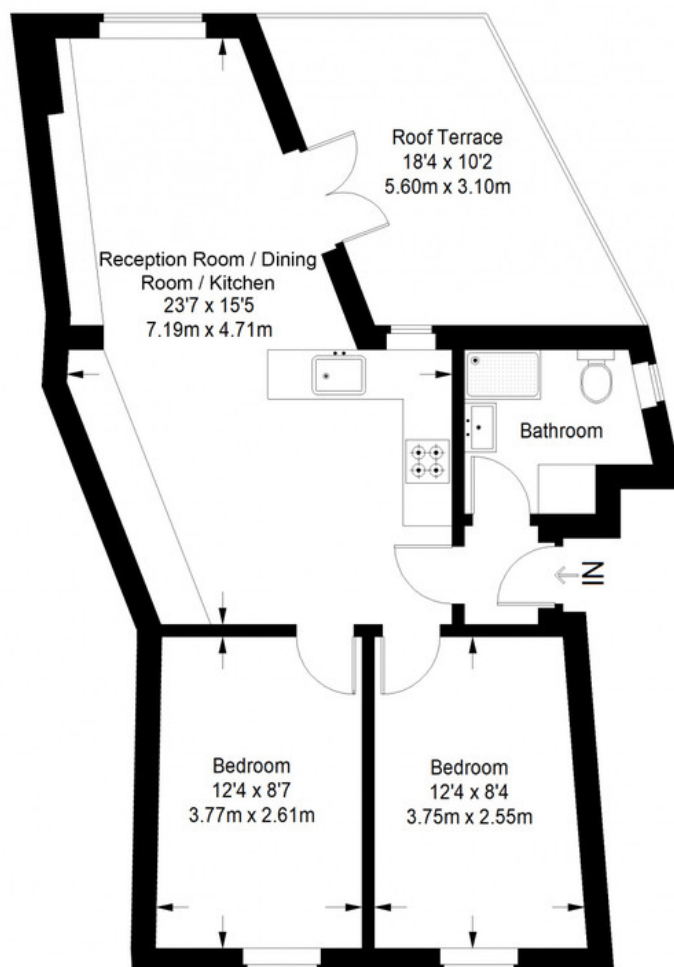


*Munday's Estate Agents Ltd.*  
2 Mary Boast Walk  
London SE5 8SP  
020 3318 8900

[www.mundays.com](http://www.mundays.com)

**MUNDAY'S**

## Elliott's Row



**First Floor = 572 sq ft**

Approximate Gross Internal Area  
FIRST FLOOR = 572 sq ft / 53.14 sq m  
Total = 572 sq ft / 53.14 sq m



This plan is for layout guidance only. Not drawn to scale unless stated. Windows and door openings are approximate. Whilst every care is taken in the preparation of this plan, please check all dimensions, shapes and compass bearings before making any decisions reliant upon them. (ID357409)

*Munday's Estate Agents Ltd.*  
2 Mary Boast Walk  
London SE5 8SP  
020 3318 8900

[www.mundays.com](http://www.mundays.com)