

Eliot Bank, Forest Hill

£399,950



In fair Forest Hill where we lay our scene, find this fourth floor south-facing ex-LA apartment with two double bedrooms and the sunniest of balconies/aspects onto communal gardens/grounds, and the tallest of trees (well, at least in SE London!).

Walk just nine minutes to Forest Hill Station - with Overground and regular services. You're also gloriously close to Horniman (hillside) Gardens and Museum. Parking is unrestricted on-street.

MUNDAY'S



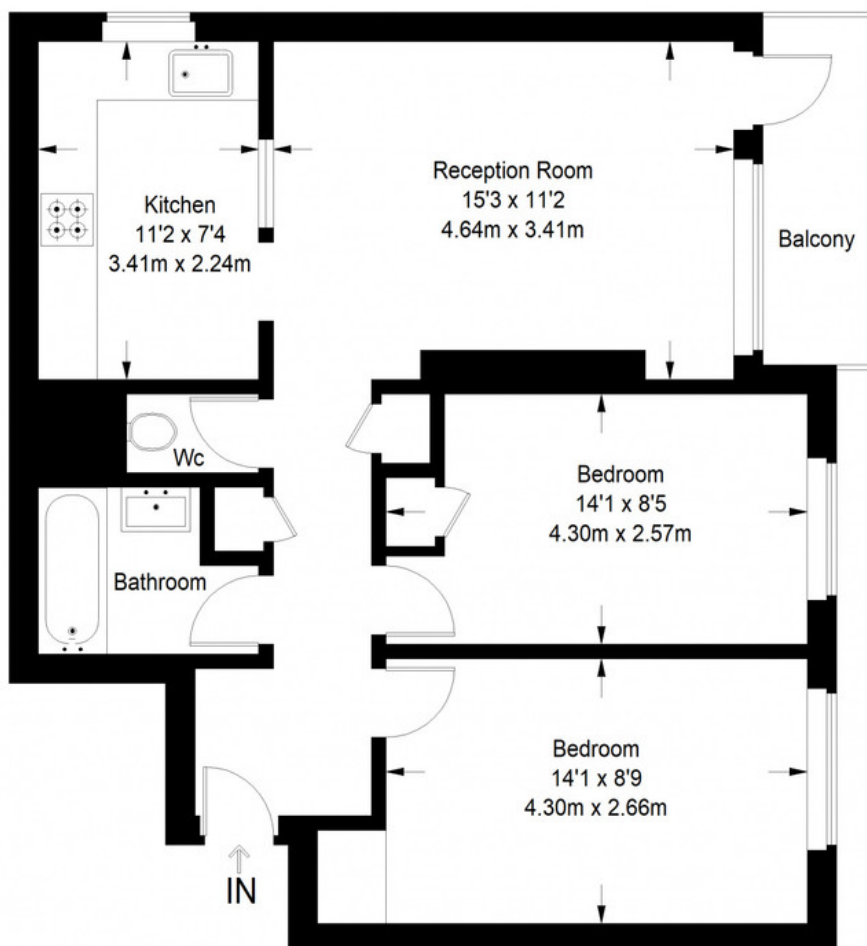
*Munday's Estate Agents Ltd.*  
2 Mary Boast Walk  
London SE5 8SP  
020 3318 8900

[www.mundays.com](http://www.mundays.com)



**MUNDAY'S**

## Elliott Bank



**Fourth Floor = 673 sq ft**

Approximate Gross Internal Area  
FOURTH FLOOR = 673 sq ft / 62.52 sq m  
Total = 673 sq ft / 62.52 sq m



This plan is for layout guidance only. Not drawn to scale unless stated. Windows and door openings are approximate. Whilst every care is taken in the preparation of this plan, please check all dimensions, shapes and compass bearings before making any decisions reliant upon them. (ID357409)

*Munday's Estate Agents Ltd.*  
2 Mary Boast Walk  
London SE5 8SP  
020 3318 8900

[www.mundays.com](http://www.mundays.com)